

0CNP2-M88800EN

# Contents

Fig. No.    Fig. Name

ENGINE RELATED SECTION

1. ENGINE RELATED

DRIVE & TRAVEL SECTION

2. TRAVEL CLUTCH

3. BELT DRIVE

4. TRAVEL DRIVE

CONTROL SECTION

5. HANDLE

6. CLUTCH CONTROL

7. CHANGE CONTROL

8. SNOW THROW UP CONTROL

CHASSIS & CRAWLER SECTION

9. CHASSIS

10. CRAWLER

ELECTRICAL PARTS SECTION

11. BATTERY

12. SWITCH & HARNESS

13. LAMP

SNOW REMOVING SECTION

14. SNOW REMOVING FRAME

Fig. No.    Fig. Name

15. CHUTE

16. GEAR CASE

17. AUGER

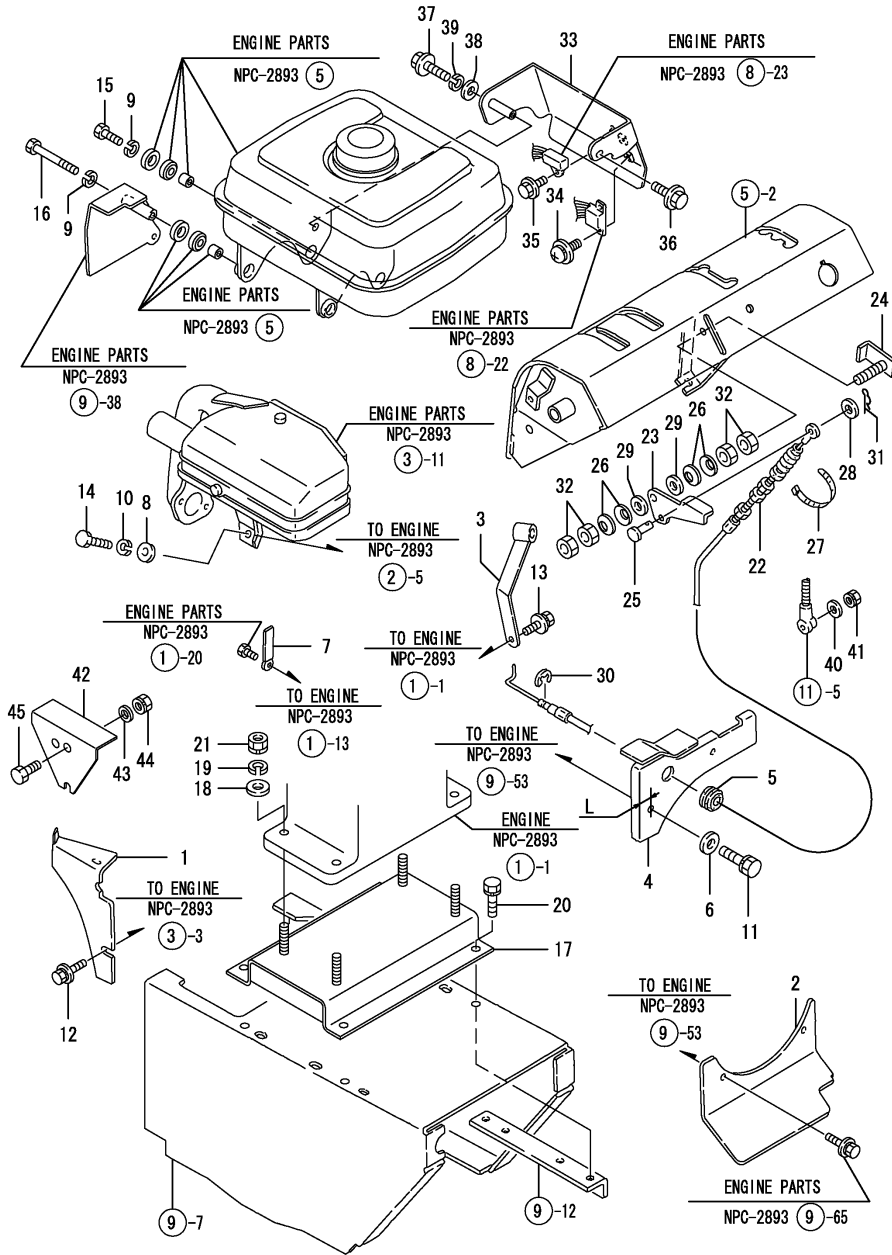
LABELS & ACCESSORIES

18. MARKS

19. TOOLS & ACCESSORIES

20. LABELS(SAFETY(ADDNL.ITEM))

Fig.1. ENGINE RELATED



(A)=YSR1080TV  
(B)=YSR1080TSV  
(C)=

(D)=  
(E)=  
(F)=

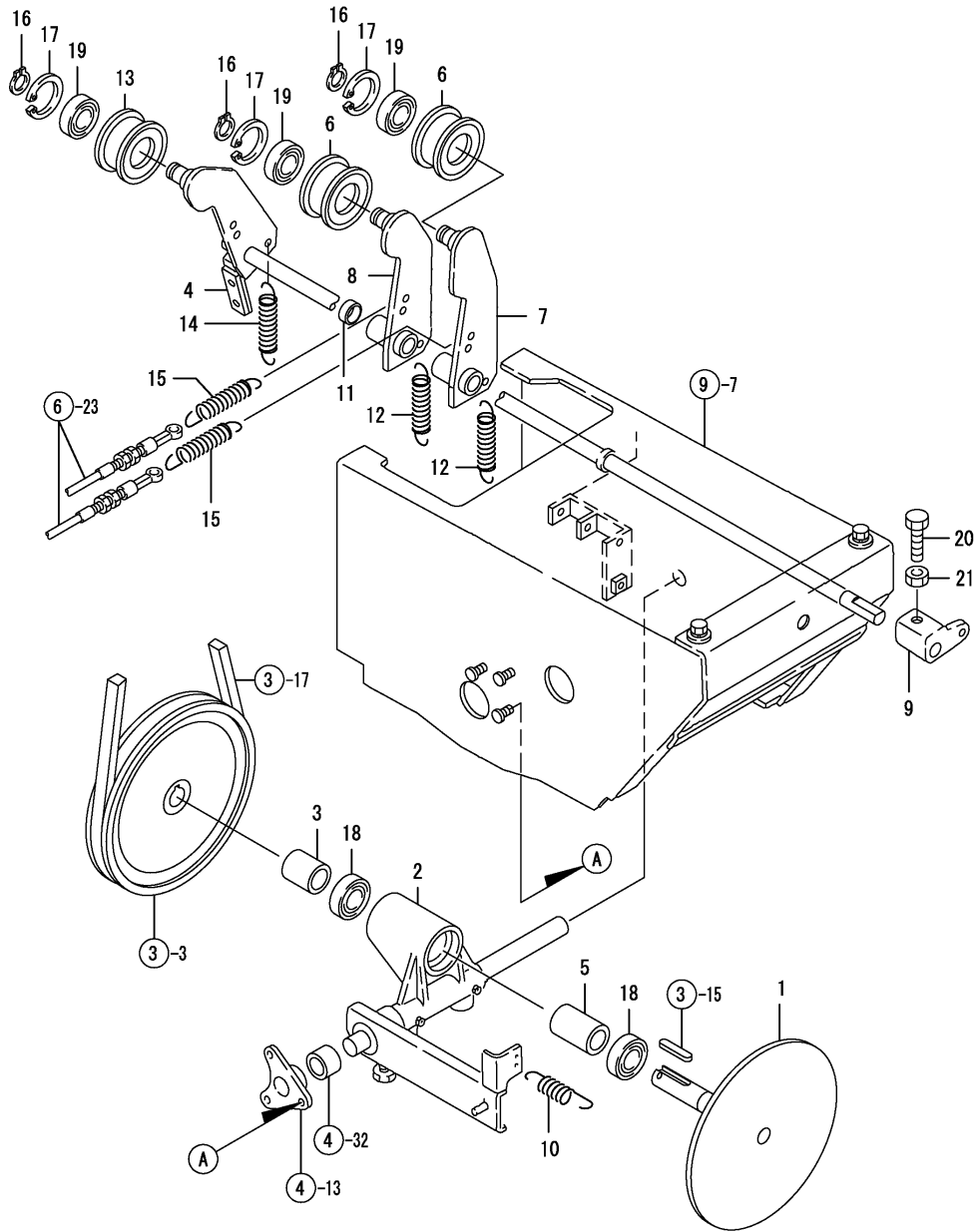
No.	Lev.	Parts No.	Description	Q'ty						I	R
				(A)	(B)	(C)	(D)	(E)	(F)		
1	1	1N1723-00061	COVER B,AMXILIARY	1	1						
2	1	1N1723-00201	COVER,RECOIL	1	1						
3	1	1N1723-00300	GUIDE,HANDLE	1	1						
3-1	1	1N1723-00301 (A=F010062) (B=F010267)	GUIDE,HANDLE	1	1						N
4	1	1N1723-00330	COVER A,AUXILIARY	1	1						
4-1	1	1N1723-00331 (A=SEE NOTO) (B=SEE NOTO)	COVER	1	1						S 1
5	1	1N1723-00350	GROMMET BG-12-1	1	1						
6	1	1J3999-02010	WASHER 6	2	2						
7	1	1N1710-32600	CLAMP 8X70	1	1						
8	1	22137-060000	WASHER, 6	1	1						
9	1	22217-060000	WASHER, SPRING 6	4	4						
10	1	22217-060000	WASHER, SPRING 6	1	1						
11	1	26016-060204	BOLT M 6X 20	2	2						
12	1	26018-060124	BOLT M 6X 12	2	2						
13	1	26018-080164	BOLT M 8X 16	1	1						
14	1	26116-060162	BOLT, M6X 16 PLATED	1	1						
15	1	26116-060254	BOLT, M6X 25 PLATED	3	3						
16	1	26116-060702	BOLT, M6X 70 PLATED	1	1						
17	1	1N1723-01000	BASE,ENGINE	1	1						
18	1	22137-100000	WASHER, 10	4	4						
19	1	22217-100000	WASHER, SPRING 10	4	4						
20	1	26016-100254	BOLT M10X 25	4	4						
21	1	26717-100002	NUT, M10	4	4						
22	1	1N1723-02001	WIRE, ACCELE	1	1						
23	1	1N1723-02010	LEVER,ACCELERATOR	1	1						
24	1	1N1723-02020	FULCRUM,ACCEL.LEVER	1	1						
25	1	1N1711-32330	PIN 6X12,FLAT HEAD	1	1						
26	1	1N1570-51130	SPRING,BELLEVILLE	4	4						
27	1	1E6460-83400	BAND 100	1	1						
28	1	22117-060000	WASHER, 6	1	1						
29	1	22137-080000	WASHER, 8	2	2						
30	1	22272-000050	RING, E- 5	1	1						
31	1	22372-060000	PIN, SNAP 6	1	1						
32	1	26717-080002	NUT, M8	4	4						
33	1	1N1723-00280 (A=F010099) (B=F010394)	BRACKET	1	1						W
34	1	26023-040102 (B=F010394)	SCREW, M4X10		2						W
35	1	26106-060122 (B=F010394)	BOLT, M6X 12 PLATED		1						W
36	1	26106-060122 (A=F010099) (B=F010394)	BOLT, M6X 12 PLATED	1	1						W
37	1	26106-060402 (A=F010099) (B=F010394)	BOLT, M6X 40 PLATED	1	1						W
37-1	1	26117-060452 (A=FXXXXXX) (B=FXXXXXX)	BOLT M 6X 45 PLATED	1	1						S
38	1	22117-060000 (A=FXXXXXX) (B=FXXXXXX)	WASHER, 6	1	1						W
39	1	22217-060000	WASHER, SPRING 6	1	1						W

Remarks

(1) L= REF.NO.4 16M/M, 4-1 10M/M.



Fig.2. TRAVEL CLUTCH

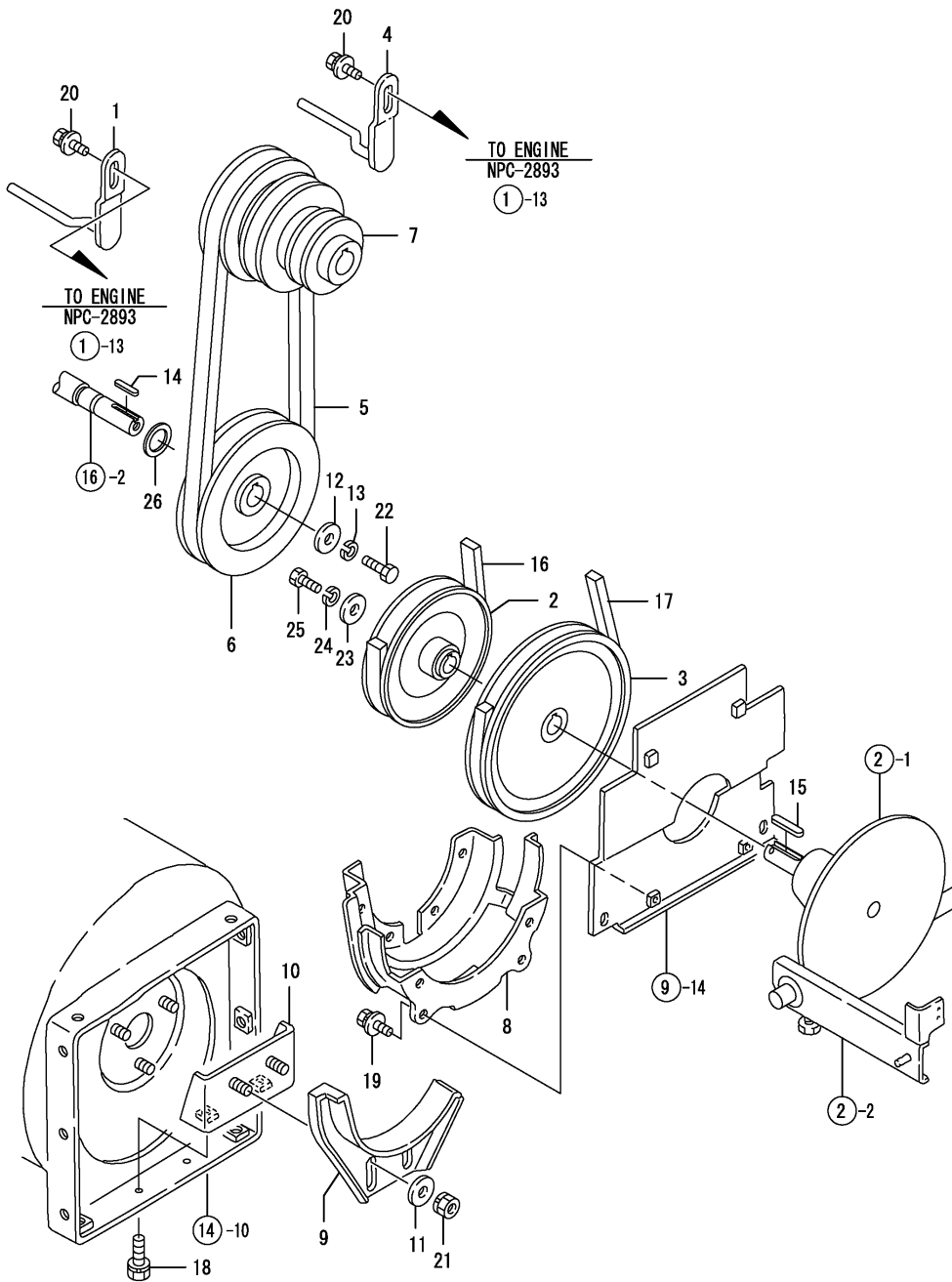


(A)=YSR1080TV  
(B)=YSR1080TSV  
(C)=

(D)=  
(E)=  
(F)=

No.	Lev.	Parts No.	Description	Q'ty						I	R
				(A)	(B)	(C)	(D)	(E)	(F)		
1	1	1N1721-12051	SHAFT COMP.,PULLEY	1	1						
2	1	1N1720-12071	HOUSING COMP.,CLUTCH	1	1						
3	1	1N1721-12080	COLLAR 18X25X30	1	1						
4	1	1N1721-12112	SHAFT,AUGER TENSION	1	1						
5	1	1N1570-12200	COLLAR 18X25X40	1	1						
6	1	1N1711-12200	PULLEY,TENSION	2	2						
7	1	1N1721-12220	ARM,TRAVEL TENSION	1	1						
7-1	1	1N1721-12221	TENSION ARM	1	1						N
		(A=F010044) (B=F010063)									
8	1	1N1711-12230	ARM,RUNNING TENSION	1	1						
8-1	1	1N1711-12231	TENSION ARM	1	1						N
		(A=F010044) (B=F010063)									
9	1	1N1710-12240	PLATE A,CAM	1	1						
9-1	1	1N1710-12241	PLATE A,CAM	1	1						R
		(A=F010099) (B=F010394)									
10	1	1N1570-12280	SPRING,CLUTCH	1	1						
11	1	1N1711-12280	COLLAR 13X20X5	1	1						
12	1	1N1570-12350	SPRING,RETURN	2	2						
13	1	1N1721-12360	PULLEY 59,TENSION	1	1						
14	1	1N1721-12560	SPRING C,RETURN	1	1						
15	1	1J3192-40550	SPRING 86,DROPPER	2	2						
16	1	22242-000150	RING, 15	3	3						
17	1	22252-000350	RING, 35	3	3						
18	1	24104-060034	BEARING, BALL 6003UU	2	2						
19	1	24107-062020	BEARING, 6202ZZC3	3	3						
20	1	26116-080252	BOLT, M8X 25 PLATED	1	1						
21	1	26717-080002	NUT, M8	1	1						

Fig.3. BELT DRIVE

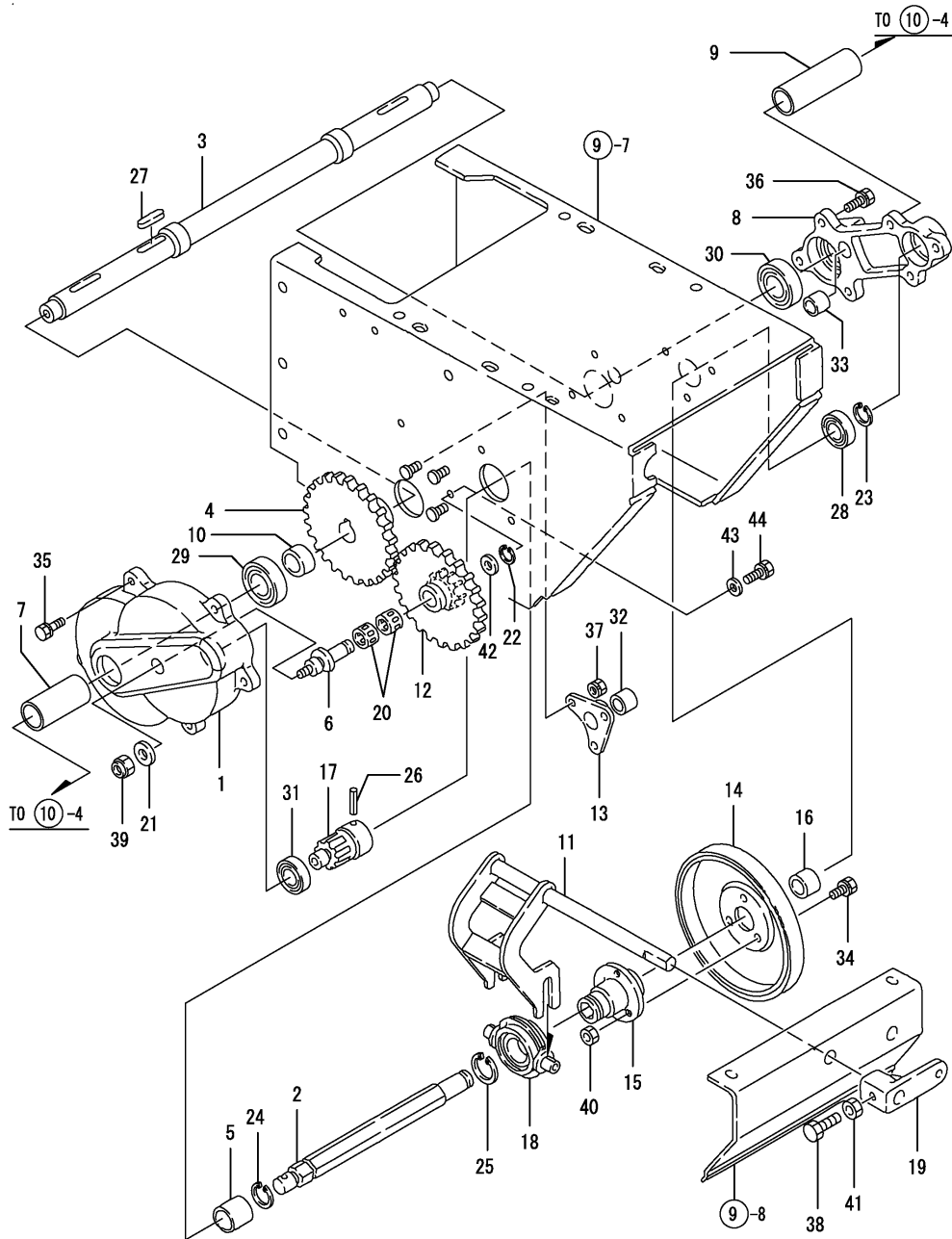


(A)=YSR1080TV  
(B)=YSR1080TSV  
(C)=

(D)=  
(E)=  
(F)=

No.	Lev.	Parts No.	Description	Q'ty						I	R
				(A)	(B)	(C)	(D)	(E)	(F)		
1	1	1N1723-12000	RETAINER A,BELT	1	1						
2	1	1N1711-12020	PULLEY 125A COMP.	1	1						
3	1	1N1711-12030	PULLEY 160A COMPL	1	1						
4	1	1N1723-12030	RETAINER B,BELT	1	1						
5	1	1N3020-12050	V-BELT B-31(W600	1	1						
6	1	1N1721-12350	PULLEY 135B	1	1						
7	1	1N1721-12401	PULLEY,ENGINE	1	1						
8	1	1N1711-12560	GUIDE COMP.,BELT	1	1						
9	1	1N1721-13181	GUIDE,PULLEY	1	1						
10	1	1N1711-13201	STAY,GUIDE	1	1						
11	1	22137-080000	WASHER, 8	2	2						
12	1	22157-080000	WASHER, 8	1	1						
12-1	1	1J3940-14250	WASHER 8.5X30X4.5	1	1						N
		(A=F010167)	(B=F010721)								
13	1	22217-080000	WASHER, SPRING 8	1	1						
14	1	22512-050300	KEY, 5X 30	1	1						
15	1	22512-050350	KEY, 5X 35	1	1						
16	1	25122-003401	V-BELT, A34H	1	1						
17	1	25122-003401	V-BELT, A34H	1	1						
18	1	26016-080162	BOLT, M8X 16	2	2						
19	1	26018-060124	BOLT M 6X 12	2	2						
20	1	26018-080204	BOLT M 8X 20	2	2						
21	1	26051-080002	NUT, M8	2	2						
22	1	26116-080252	BOLT, M8X 25 PLATED	1	1						
23	1	22157-080000	WASHER, 8	1	1						
24	1	22217-080000	WASHER, SPRING 8	1	1						
25	1	26116-080252	BOLT, M8X 25 PLATED	1	1						
26	1	1N1723-12400	SPACER, 17X25X2	1	1						W
		(A=F010167)	(B=F010721)								

Fig.4. TRAVEL DRIVE



(A)=YSR1080TV  
(B)=YSR1080TSV  
(C)=

(D)=  
(E)=  
(F)=

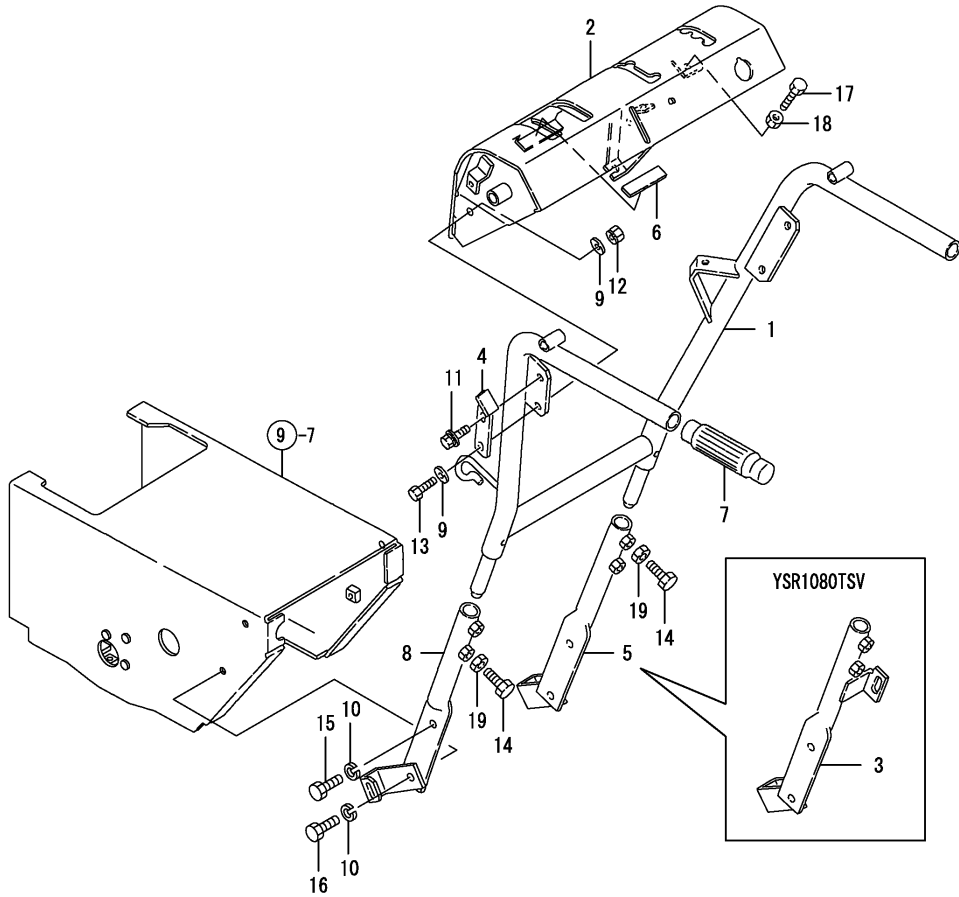
No.	Lev.	Parts No.	Description	Q'ty						I	R
				(A)	(B)	(C)	(D)	(E)	(F)		
1	1	1N1710-21001	CASE,REDUCTION GEAR	1	1						
2	1	1N1721-21001	SHAFT,SLIDE	1	1						
3	1	1N1960-21000	SHAFT COMP.,DRIVE	1	1						
4	1	1N1710-21010	GEAR,SPUR	1	1						
5	1	1N1721-21010	COLLAR	1	1						
6	1	1N1710-21022	SHAFT,NEEDLE	1	1						
6-1	1	1N1710-21023	SHAFT,NEEDLE	1	1						N
		(A=FXXXXXX) (B=FXXXXXX)									
6-2	1	1N1710-21024	SHAFT,NEEDLE	1	1						N
		(A=F010207) (B=F010947)									
7	1	1N1960-21050	COLLAR 21X27X61	1	1						
8	1	1N1720-21062	CASE,BEARING	1	1						
9	1	1N1960-21060	COLLAR 21X27X87	1	1						
10	1	1N1570-21070	COLLAR 21X27X13	1	1						
11	1	1N1720-21071	LEVER,CHANGE	1	1						
12	1	1N1570-21090	GEAR,2-STAGE SPUR	1	1						
13	1	1N1570-21170	FLANGE	1	1						
14	1	1N1570-21200	PLATE,FRICITION	1	1						
15	1	1N1720-21211	SEAT,FRICT'N PL.MTG.	1	1						
16	1	1N1720-21231	COLLAR 15X25X10	1	1						
17	1	1N1720-21240	PINION	1	1						
18	1	1N1570-21300	SLIDER,CLUTCH	1	1						
19	1	1N1710-21320	PLATE C,CAM	1	1						
20	1	1N1570-21600	BEARING	2	2						
21	1	22157-080000	WASHER, 8	1	1						
22	1	22242-000120	RING, 12	1	1						
23	1	22242-000150	RING, 15	1	1						
24	1	22242-000190	RING, 19	1	1						
25	1	22242-000250	RING, 25	1	1						
26	1	22351-060025	PIN, SPRING 6.0X25	1	1						
27	1	22512-050300	KEY, 5X 30	1	1						
28	1	24104-060024	BEARING, BALL 6002UU	1	1						
29	1	24104-060044	BEARING, BALL 6004UU	1	1						
30	1	24104-060044	BEARING, BALL 6004UU	1	1						
31	1	24104-062024	BEARING, BALL 6202UU	1	1						
32	1	24550-015150	BUSH, 15X15	1	1						
33	1	24550-015150	BUSH, 15X15	1	1						
34	1	26016-060164	BOLT 6X16 W/L.W.	3	3						
35	1	26016-060204	BOLT M 6X 20	5	5						
35-1	1	26016-060202	BOLT, M6X 20	5	5						N
		(A=FXXXXXX) (B=F010947)									
36	1	26016-060204	BOLT M 6X 20	6	6						
37	1	26051-060002	NUT, M6	3	3						
38	1	26116-080252	BOLT, M8X 25 PLATED	1	1						
39	1	26347-080002	NUT, M8	1	1						
40	1	26717-060002	NUT, M6	3	3						
41	1	26717-080002	NUT, M8	1	1						
42	1	22117-120000	WASHER, 12	1	1						W
		(A=F010207) (B=F010947)									
43	1	22157-060000	WASHER, 6	1	1						W
		(A=F010207) (B=F010947)									

N:Old  $\xrightarrow{\text{Yes}}$  New, Q:Old  $\xrightarrow{\text{No}}$  New, R:Old  $\xrightarrow{\text{Yes}}$  New, S:Old  $\xrightarrow{\text{No}}$  New, W:Add, Z:Discontinued, F:Interchangeable by set, K:Q'ty Change  
 ++ CONTINUE ++  
 Copyright (C) YANMAR CO., LTD. All Rights Reserved.





Fig.5. HANDLE

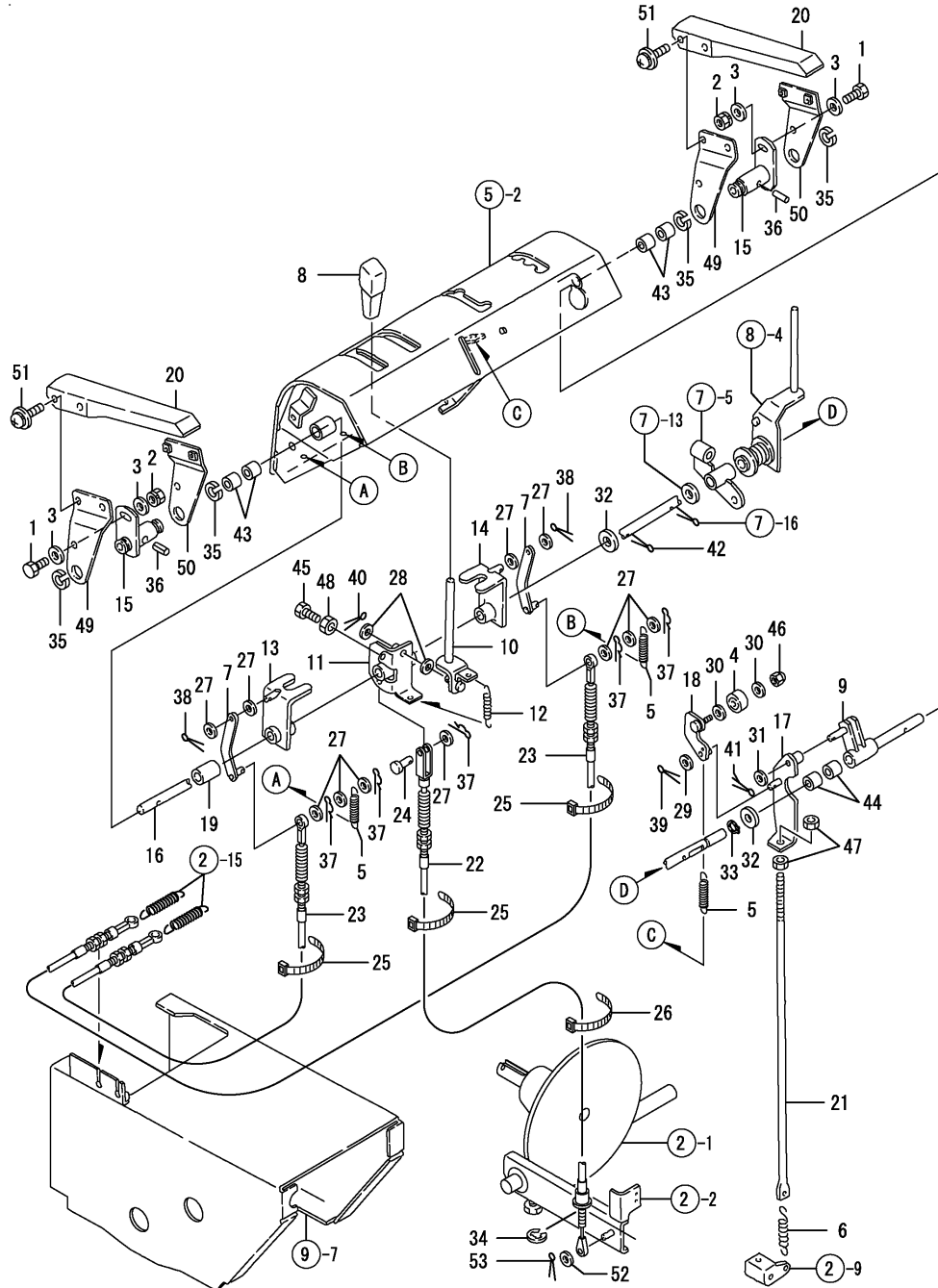


(A)=YSR1080TV  
(B)=YSR1080TSV  
(C)=

(D)=  
(E)=  
(F)=

No.	Lev.	Parts No.	Description	Q'ty						I	R
				(A)	(B)	(C)	(D)	(E)	(F)		
1	1	1N1723-30501	HANDLE COMPL.	1	1						
2	1	7N1723-30510	PL.AS.,CONT.BOX CMP.	1	1						
2-1	1	7N1723-30511	PL.AS.,CONT.BOX CMP.	1	1						N
		(A=F010062)	(B=F010267)								
3	1	1N1721-35070	SUPPORT COMP.,HANDLE		1						
4	1	1N1723-30660	STOPPER,DEADMAN	1	1						
5	1	1N1721-35040	SUPPORT R CMP,HANDLE	1							
6	1	1N1723-30680	RUBBER,STOPPER	1	1						
7	1	1N1710-82140	GRIP BK-8,HANDLE	2	2						
8	1	1N1721-35001	SUPPORT L CMP,HANDLE	1	1						
9	1	22137-080000	WASHER, 8	2	2						
10	1	22217-100000	WASHER, SPRING 10	4	4						
11	1	26018-080164	BOLT M 8X 16	2	2						
12	1	26051-080002	NUT, M8	1	1						
13	1	26116-080202	BOLT, M8X 20 PLATED	1	1						
14	1	26116-100252	BOLT, M10X 25 PLATED	4	4						
15	1	26116-100302	BOLT, M10X 30 PLATED	2	2						
16	1	26116-100352	BOLT, M10X 35 PLATED	2	2						
17	1	26117-080304	BOLT, M8X 30 PLATED	1	1						
18	1	26717-080002	NUT, M8	1	1						
19	1	26717-100002	NUT, M10	4	4						

Fig.6. CLUTCH CONTROL

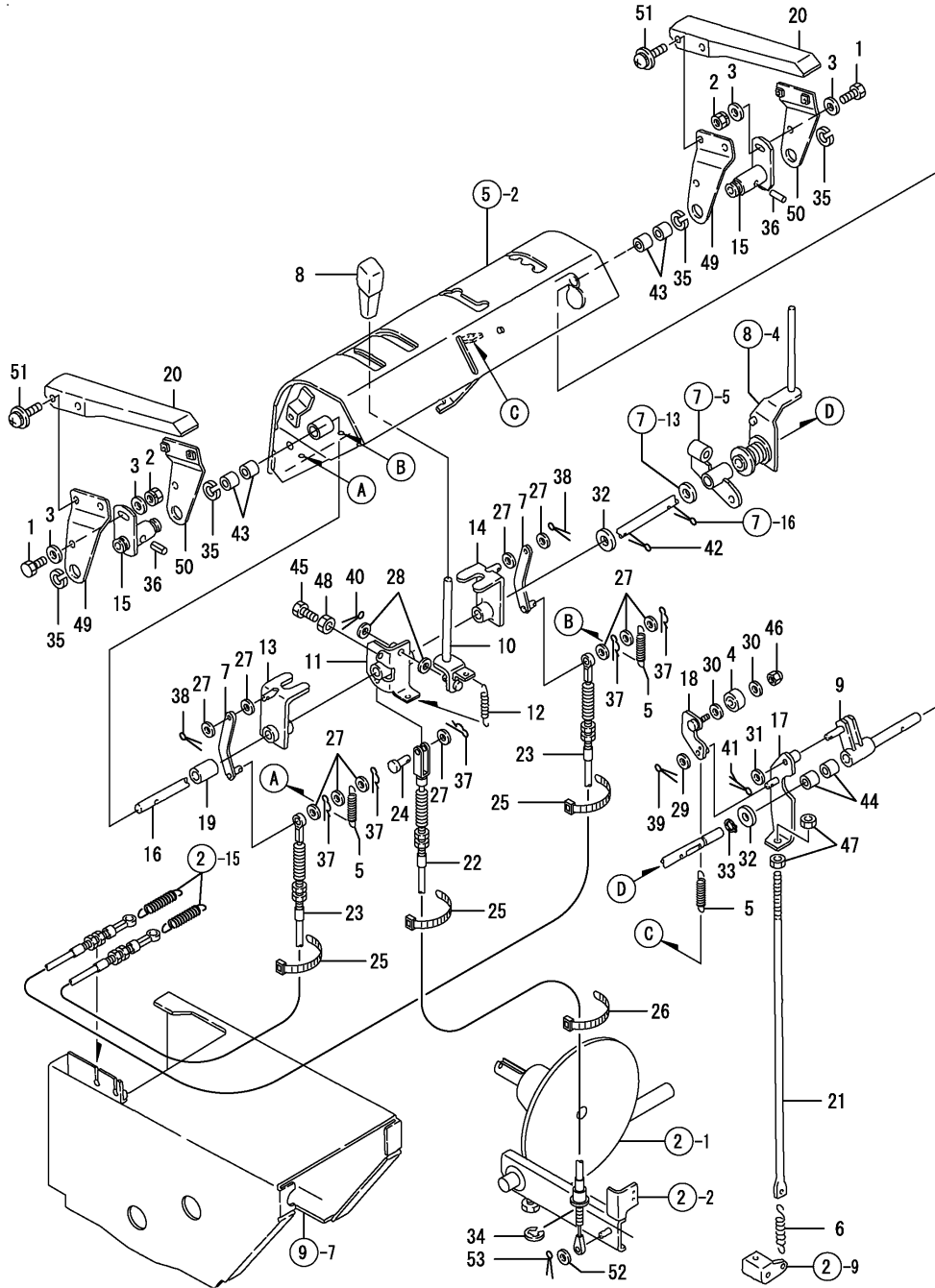


(A)=YSR1080TV  
 (B)=YSR1080TSV  
 (C)=

(D)=  
 (E)=  
 (F)=

No.	Lev.	Parts No.	Description	Q'ty						I	R
				(A)	(B)	(C)	(D)	(E)	(F)		
1	1	1J3999-00260	BOLT 6X16	2	2						
2	1	1J3999-01050	NUT 6 W/SP.WASHER	2	2						
3	1	1J3999-02110	WASHER 6,ROUND	4	4						
4	1	1J3999-06000	BEARING 626-2NSL	1	1						
5	1	1N1723-31350	SPRING,RETURN	3	3						
6	1	1N1713-31010	SPRING 19X90	1	1						
7	1	1N1723-31011	RETAINER	2	2						
8	1	1N1723-31040	KNOB,ACCELERAT.LEVER	1	1						
9	1	1N1723-31050	SHAFT CMP,AGR.CLUTCH	1	1						
10	1	1N1723-31110	LEVER COMP.,SUB-CHG.	1	1						
11	1	1N1723-31150	SEAT COMP.,SUB-CHG.	1	1						
12	1	1N1723-31160	SPRING,LEVER	1	1						
13	1	1N1723-31231	LEVER L,CHANGE	1	1						
14	1	1N1723-31251	LEVER R,CHANGE	1	1						
15	1	1N1723-31270	BOSS COMP.,DEADMAN	2	2						
16	1	1N1723-31371	SHAFT, CLUTCH	1	1						
17	1	1N1723-31380	ARM COMP.,AGR.CLUTCH	1	1						
18	1	1N1723-31390	CLAW CMP.,AGR.CLUTCH	1	1						
19	1	1N1723-31410	COLLAR 12X20X25	1	1						
20	1	1N1723-31360	LEVER,DEADMAN	2	2						
21	1	1N1723-31501	BOLT M8X515,JOINT	1	1						
22	1	1N1723-31510	WIRE TXE,CLUTCH	1	1						
23	1	1N1723-31520	WIRE TEA,TRAVEL	2	2						
24	1	1J3999-05010	PIN 6X14 FLAT HEAD	1	1						
25	1	1E6460-83400	BAND 100	3	3						
26	1	1E6102-84970	BAND 140,WIRE LOCK	1	1						
27	1	22117-060000	WASHER, 6	11	11						
28	1	22117-060000	WASHER, 6	2	2						
29	1	22117-060000	WASHER, 6	1	1						
30	1	22117-060000	WASHER, 6	2	2						
31	1	22117-080000	WASHER, 8	1	1						
32	1	22117-120000	WASHER, 12	2	2						
33	1	22242-000120	RING, 12	1	1						
34	1	22272-000070	RING, E- 7	1	1						
35	1	22292-000170	RING, S-17	4	4						
36	1	22351-050020	PIN, SPRING 5.0X20	2	2						
37	1	22372-060000	PIN, SNAP 6	5	5						
38	1	22417-200120	COTTER PIN 2.0X12	2	2						
39	1	22417-200120	COTTER PIN 2.0X12	1	1						
40	1	22417-200120	COTTER PIN 2.0X12	1	1						
41	1	22417-200160	PIN, COTTER 2.0X16	1	1						
42	1	22417-320250	PIN, COTTER 3.2X25	1	1						
43	1	24550-012150	BUSH, 12X15	4	4						
44	1	24550-012150	BUSH, 12X15	2	2						
45	1	26116-080252	BOLT, M8X 25 PLATED	1	1						
46	1	26347-060002	NUT, M6	1	1						
47	1	26717-080002	NUT, M8	3	3						
48	1	26717-080002	NUT, M8	1	1						
49	1	1N1723-31300	PLATE L,CLUTCH	2	2						
50	1	1N1723-31310	PLATE R,CLUTCH	2	2						
51	1	1J3999-00250	SCREW 6X16D,PHM/C	8	8						

Fig.6. CLUTCH CONTROL



(A)=YSR1080TV  
(B)=YSR1080TSV  
(C)=

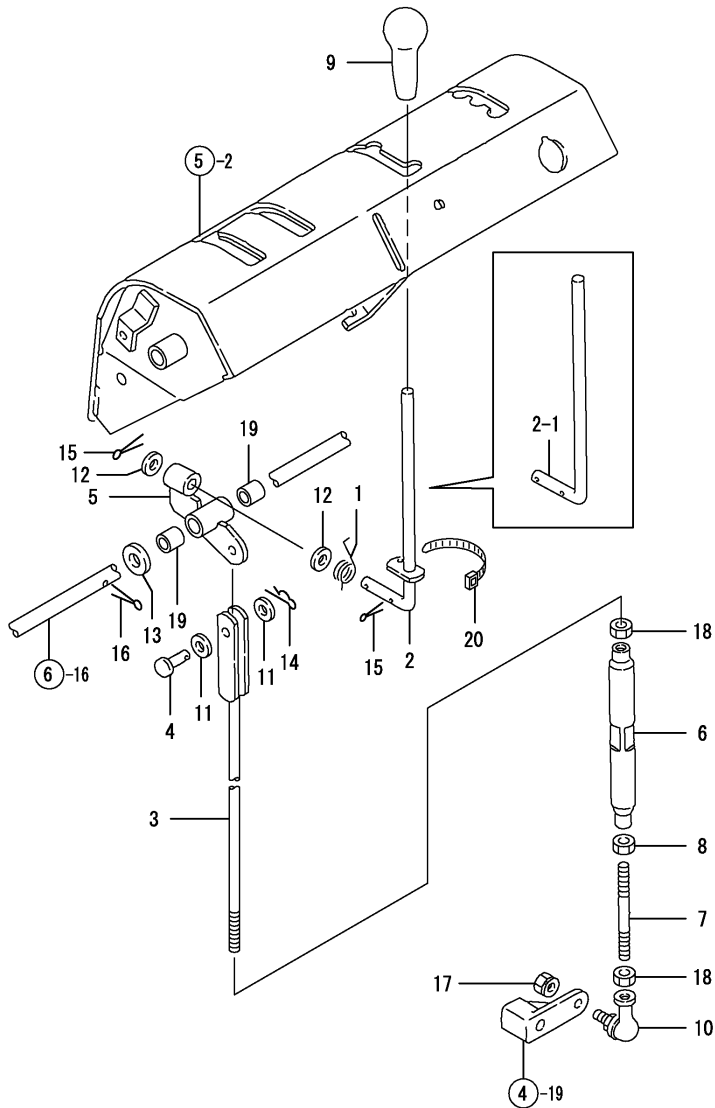
(D)=  
(E)=  
(F)=

No.	Lev.	Parts No.	Description	Qty						I	R
				(A)	(B)	(C)	(D)	(E)	(F)		
52	1	22117-060000	WASHER, 6	1	1						
53	1	22417-200120	COTTER PIN 2.0X12	1	1						

Fig.7. CHANGE CONTROL

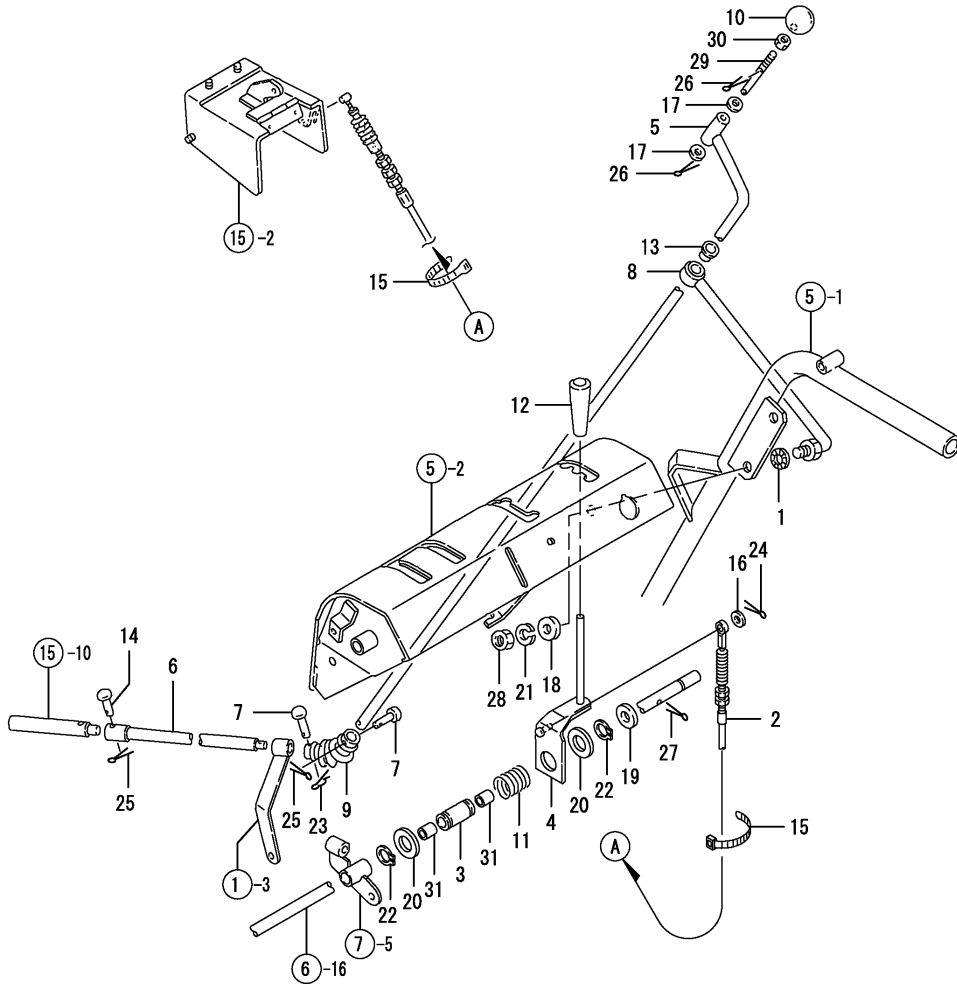
(A)=YSR1080TV  
(B)=YSR1080TSV  
(C)=

(D)=  
(E)=  
(F)=



No.	Lev.	Parts No.	Description	Q'ty						I	R
				(A)	(B)	(C)	(D)	(E)	(F)		
1	1	1N1723-32002	SPRING,CHANGE LEVER	1	1						
1-1	1	1N1723-32003	SPRING,CHANGE LEVER	1	1						N
		(A=F010031) (B=F010058)									
2	1	1N1723-32010	LEVER CMP.,CHG.LEVER	1	1						
2-1	1	1N1723-32070	LEVER,CHANGE	1	1						S
		(A=F010031) (B=F010058)									
3	1	1N1723-32030	ROD COMP.,CHANGE	1	1						
3-1	1	1N1723-32031	ROD COMP.,CHANGE	1	1						N
		(A=F010099) (B=F010394)									
4	1	1N1723-32060	RIVET 8X18	1	1						
5	1	1N1723-32080	SEAT,CHANGE	1	1						
6	1	1N1570-32290	TURNBUCKLE	1	1						
7	1	1N1570-32320	ROD B,CHANGE LEVER	1	1						
8	1	1N1570-32950	NUT 8	1	1						
9	1	1A1040-58160	HANDLE, LEVER	1	1						
10	1	1S6002-61160	BALL 8,LINK	1	1						
11	1	22117-080000	WASHER, 8	2	2						
12	1	22117-100000	WASHER, 10	2	2						
13	1	22117-120000	WASHER, 12	1	1						
14	1	22372-080000	PIN, SNAP 8	1	1						
15	1	22417-200160	PIN, COTTER 2.0X16	2	2						
16	1	22417-320250	PIN, COTTER 3.2X25	1	1						
17	1	26051-080002	NUT, M8	1	1						
18	1	26717-080002	NUT, M8	2	2						
19	1	24550-012150	BUSH, 12X15	2	2						
20	1	1E6460-83400	BAND 100	1	1						Z
		(A=F010031) (B=F010058)									

Fig.8. SNOW THROW UP CONTROL

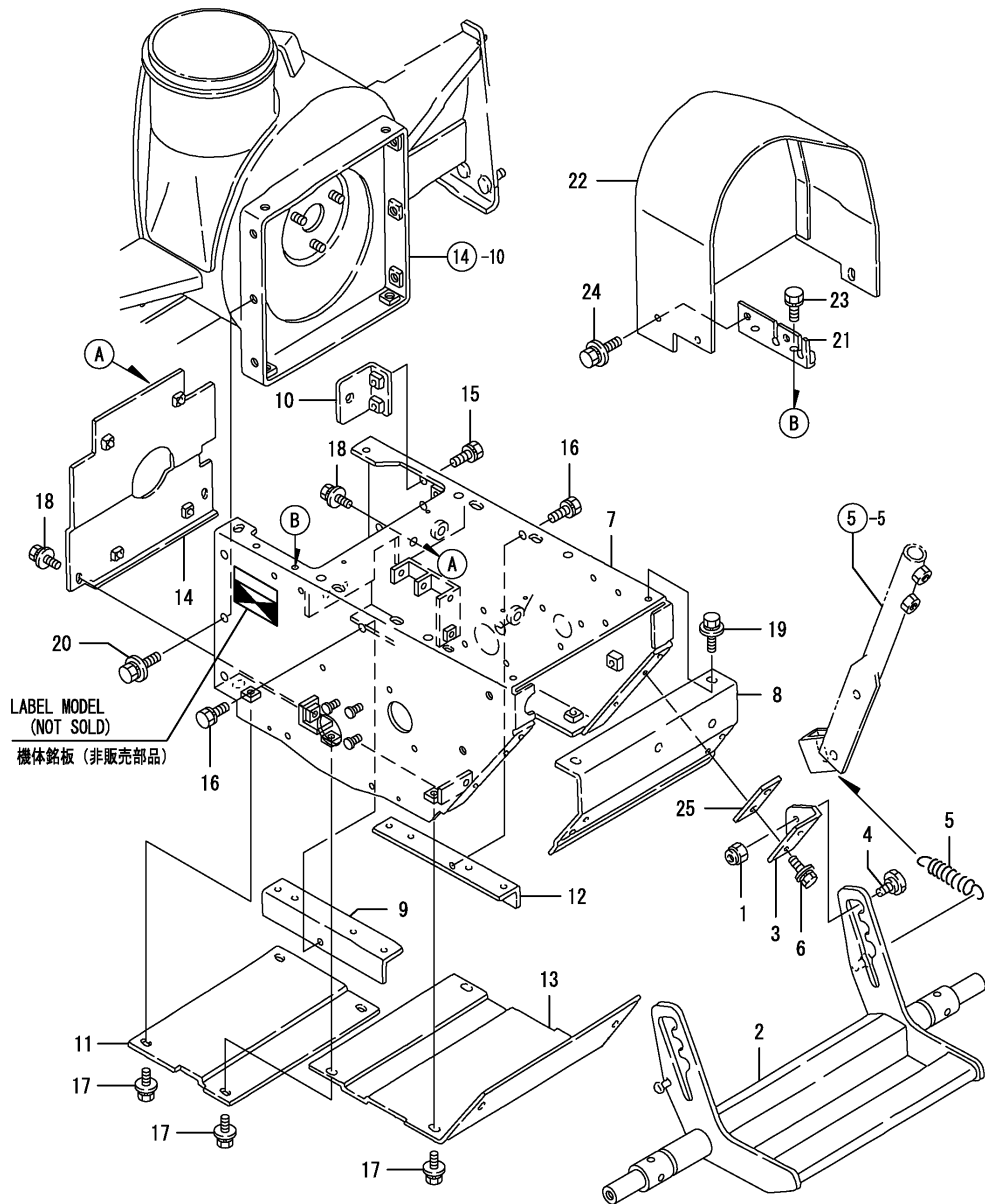


(A)=YSR1080TV  
(B)=YSR1080TSV  
(C)=

(D)=  
(E)=  
(F)=

No.	Lev.	Parts No.	Description	Q'ty						I	R
				(A)	(B)	(C)	(D)	(E)	(F)		
1	1	1J3999-02130	WASHER 12,TOOTHED	1	1						
1-1	1	22232-120000	WASHER, SPRING 12	1	1						N
		(A=F010099) (B=F010394)									
2	1	1N1723-34000	WIRE,CHUTE ADJUSTING	1	1						
3	1	1N1723-34010	COLLAR,CHUTE LEVER	1	1						
4	1	1N1723-34020	LEVER,CHUTE	1	1						
5	1	1N1723-34051	HANDLE COMP.,HANDLE	1	1						
6	1	1N1723-34081	ROD,COUPLING	1	1						
7	1	1N1723-34100	RIVET 4X22	2	2						
8	1	1N1723-34110	STAY CMP,CHUTE HANDL	1	1						
8-1	1	1N1723-34111	STAY CMP,CHUTE HANDL	1	1						N
		(A=F010099) (B=F010394)									
9	1	1N1723-34141	JOINT,UNIVERSAL	1	1						
10	1	1N1723-34150	GRIP,CHUTE HANDLE	1	1						
11	1	1N1723-34160	SPRING 27X35	1	1						
12	1	1A1140-58050	GRIP, STAND	1	1						
13	1	1S6240-63810	DBS 1215-20F	1	1						
14	1	1N1570-73260	RIVET 4X20,ROUND	1	1						
15	1	1E6460-83400	BAND 100	2	2						
16	1	22117-060000	WASHER, 6	1	1						
17	1	22117-080000	WASHER, 8	2	2						
18	1	22137-120000	WASHER, 12	1	1						Z
		(A=F010099) (B=F010394)									
19	1	22117-120000	WASHER, 12	1	1						
20	1	22137-200000	WASHER, 20	2	2						
21	1	22217-120000	WASHER, SPRING 12	1	1						
21-1	1	22232-120000	WASHER, SPRING 12	1	1						N
		(A=F010099) (B=F010394)									
22	1	22242-000200	RING, 20	2	2						
23	1	22372-040000	PIN, SNAP 4	1	1						
24	1	22417-200120	COTTER PIN 2.0X12	1	1						
25	1	22417-200120	COTTER PIN 2.0X12	2	2						
26	1	22417-200160	PIN, COTTER 2.0X16	2	2						
27	1	22417-320250	PIN, COTTER 3.2X25	1	1						
28	1	26717-120002	NUT, M12	1	1						
28-1	1	26367-120002	NUT, M12	1	1						N
		(A=F010099) (B=F010394)									
29	1	1N1723-34170	SHAFT,CHUTE HANDLE	1	1						
30	1	26717-080002	NUT, M8	1	1						
31	1	24550-012150	BUSH, 12X15	2	2						

Fig.9. CHASSIS



(A)=YSR1080TV  
(B)=YSR1080TSV  
(C)=

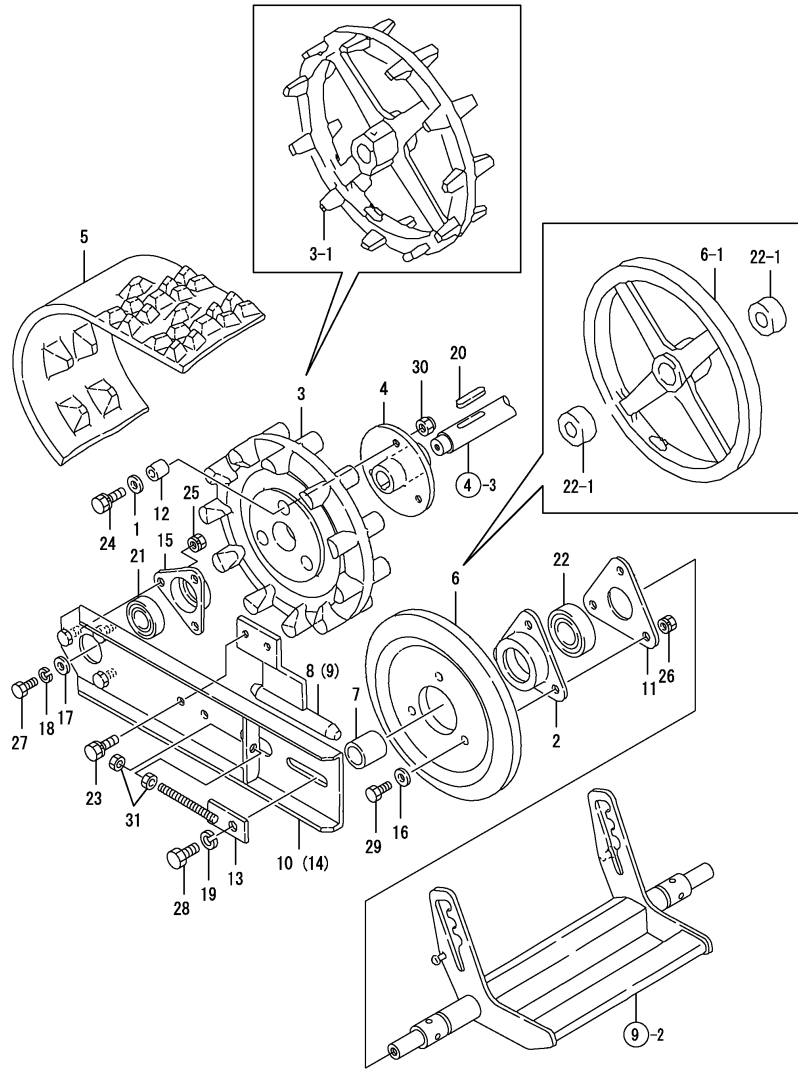
(D)=  
(E)=  
(F)=

No.	Lev.	Parts No.	Description	Q'ty						I	R
				(A)	(B)	(C)	(D)	(E)	(F)		
1	1	1J3999-01090	U-NUT M8	2	2						
2	1	1N1960-36100	PEDAL COMP.,FOOT	1	1						
3	1	1N1720-36250	FIXTURE	2	2						
4	1	1N1570-36351	BOLT,REAMER	2	2						
5	1	1N1710-36370	SPRING,FOOT	2	2						
6	1	26018-080204	BOLT M 8X 20	4	4						
6-1	1	26018-080252	BOLT, M8X 25	4	4						N
		(A=F010099) (B=F010394)									
7	1	1N1721-36001	CHASSIS COMPL.	1	1						
7-1	1	1N1721-36002	CHASSIS COMPL.	1	1						N
		(A=F010207) (B=F010947)									
8	1	1N1721-36070	PLATE R,CHASSIS	1	1						
9	1	1N1720-36100	BASE L,ENGINE	1	1						
10	1	1N1711-36110	SUPPORT,TENSION	1	1						
11	1	1N1721-36111	PLATE A,CHASSIS BTM	1	1						
12	1	1N1720-36120	BOLT 8X16 W/L.W.	1	1						
13	1	1N1721-36121	PLATE B,CHASSIS BTM	1	1						
14	1	1N1720-36221	PLATE,SHUT-OFF	1	1						
15	1	26016-060124	BOLT 6X12 W/L.W.	2	2						
16	1	26016-080164	BOLT M 8X 16	2	2						
17	1	26018-060124	BOLT M 6X 12	8	8						
18	1	26018-060164	BOLT M 6X 16	4	4						
19	1	26018-080164	BOLT M 8X 16	2	2						
20	1	26018-080164	BOLT M 8X 16	10	10						
21	1	1N1711-36090	METAL,WIRE LOCK	1	1						
22	1	7N1723-37000	PL.AS.,BELT CVR.CMP.	1	1						
22-1	1	7N1723-37050	PL.AS.,BELT CVR.CMP.	1	1						N
		(A=FXXXXXX) (B=F011072)									
23	1	26016-060164	BOLT 6X16 W/L.W.	2	2						
24	1	26018-060124	BOLT M 6X 12	3	3						
25	1	1N3020-35000	FIXTURE 2	2	2						W
		(A=F010099) (B=F010394)									

Fig.10. CRAWLER

(A)=YSR1080TV  
(B)=YSR1080TSV  
(C)=

(D)=  
(E)=  
(F)=



No.	Lev.	Parts No.	Description	Q'ty						I	R
				(A)	(B)	(C)	(D)	(E)	(F)		
1	1	1J3999-02020	WASHER 8	6	6						
1-1	1	1J3999-02050	WASHER	6	6						N
		(A=F010099) (B=F010394)									
1-2	1	1J3999-02050	WASHER	6	6						Z
		(A=F010123) (B=F010485)									
2	1	1J3000-20020	BEARING	2	2						Z
		(A=F010123) (B=F010485)									
3	1	1N1570-38000	SPROCKET 11	2	2						
3-1	1	1N1723-38500	SPROCKET, 11-43	2	2						F 1
		(A=F010123) (B=F010485)									
4	1	1N1710-38000	BOSS, SPROCKET	2	2						Z
		(A=F010123) (B=F010485)									
5	1	1N1960-38000	CRAWLER	2	2						
6	1	1N1570-38010	RING, TOP	2	2						
6-1	1	1N3021-38600	WHEEL	2	2						F 2
		(A=F010123) (B=F010485)									
7	1	1N1570-38020	COLLAR 21X27X26	2	2						Z
		(A=F010123) (B=F010485)									
8	1	1N1710-38020	GUIDE L	1	1						
9	1	1N1710-38040	GUIDE R	1	1						
10	1	1N1570-38050	PLATE L, CRAWLER SIDE	1	1						
11	1	1N1570-38090	PLATE, BEARING KEEP	2	2						Z
		(A=F010123) (B=F010485)									
12	1	1N1570-38130	COLLAR 8X14X9	6	6						Z
		(A=F010123) (B=F010485)									
13	1	1N1570-38150	BOLT W/PIPE	2	2						
13-1	1	1N1570-38151	BOLT W/PIPE	2	2						N
		(A=F010031) (B=F010058)									
14	1	1N1570-38180	PLATE R, CRAWLER SIDE	1	1						
15	1	1N1570-38210	BEARING 6203B	2	2						
16	1	22137-080000	WASHER, 8	6	6						
16-1	1	1J3999-02020	WASHER 8	6	6						N
		(A=F010031) (B=F010058)									
16-2	1	1J3999-02050	WASHER	6	6						N
		(A=F010099) (B=F010394)									
16-3	1	1J3999-02050	WASHER	6	6						Z
		(A=F010123) (B=F010485)									
17	1	22157-080000	WASHER, 8	2	2						
18	1	22217-080000	WASHER, SPRING 8	2	2						
19	1	22217-100000	WASHER, SPRING 10	2	2						
20	1	22512-050300	KEY, 5X 30	2	2						
21	1	24104-062034	BEARING, BALL 6203UU	2	2						
22	1	24104-063044	BEARING, BALL 6304UU	2	2						
22-1	1	24550-020100	BUSH, 20X10	4	4						S
		(A=F010123) (B=F010485)									
23	1	26016-080204	BOLT M 8X 20	4	4						
24	1	26016-080302	BOLT, M8X 30	6	6						
24-1	1	26116-080304	BOLT, M8X 30 PLATED	6	6						N
		(A=F010031) (B=F010058)									
24-2	1	26116-080304	BOLT, M8X 30 PLATED	6	6						Z
		(A=F010123) (B=F010485)									

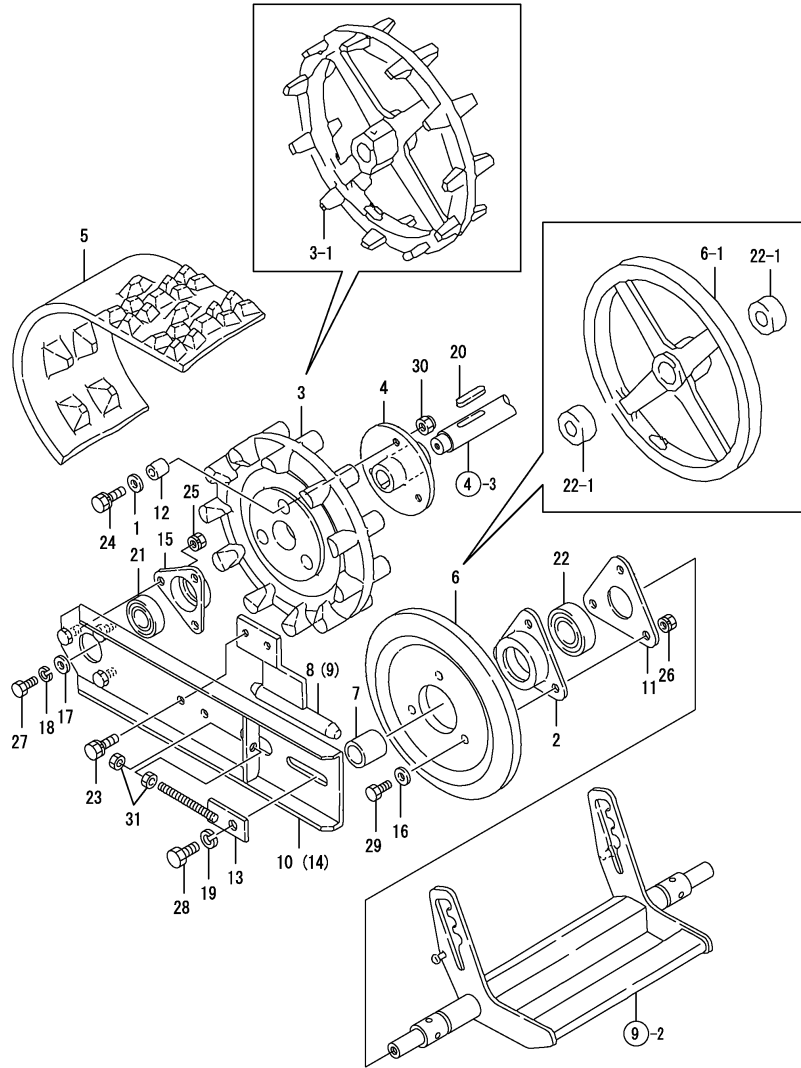
Remarks

- (1) REF.NO.3-1 IS INTERCHANGEABLE WITH A SET OF REF.NOS.3,1-1,4,12,24-1 & 30.
- (2) REF.NOS.6-1 & 22-1 ARE A SET AND INTERCHANGEABLE WITH A SET OF REF. NOS.6,22,2,7,11,16-2,26-1 & 29-2.

Fig.10. CRAWLER

(A)=YSR1080TV  
(B)=YSR1080TSV  
(C)=

(D)=  
(E)=  
(F)=



No.	Lev.	Parts No.	Description	Qty						I	R
				(A)	(B)	(C)	(D)	(E)	(F)		
25	1	26051-080002	NUT, M8	6	6						
26	1	26051-080002	NUT, M8	6	6						
26-1	1	26347-080002	NUT, M8	6	6						N
26-2	1	(A=F010099)	(B=F010394)	NUT, M8	6	6					Z
		(A=F010123)	(B=F010485)								
27	1	26116-080252	BOLT, M8X 25 PLATED	2	2						
28	1	26116-100252	BOLT, M10X 25 PLATED	2	2						
29	1	26117-080252	BOLT M 8X 25 PLATED	6	6						
29-1	1	26116-080254	BOLT, M8X 25 PLATED	6	6						N
		(A=F010031)	(B=F010058)								
29-2	1	26116-080304	BOLT, M8X 30 PLATED	6	6						N
		(A=F010099)	(B=F010394)								
29-3	1	26116-080304	BOLT, M8X 30 PLATED	6	6						Z
		(A=F010123)	(B=F010485)								
30	1	26347-080002	NUT, M8	6	6						Z
		(A=F010123)	(B=F010485)								
31	1	26717-080002	NUT, M8	4	4						

Remarks

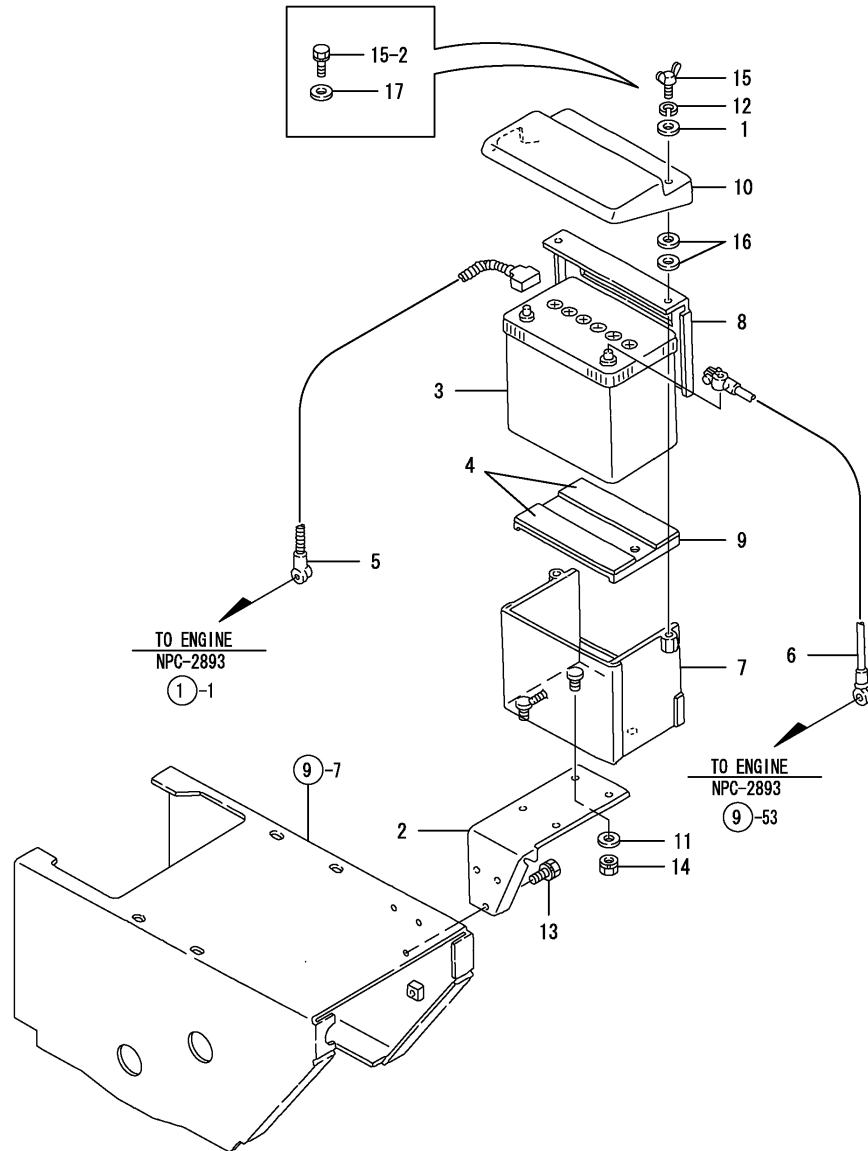
- (1) REF.NO.3-1 IS INTERCHANGEABLE WITH A SET OF REF.NOS.3,1-1,4,12,24-1 & 30.
- (2) REF.NOS.6-1 & 22-1 ARE A SET AND INTERCHANGEABLE WITH A SET OF REF. NOS.6,22,2,7,11,16-2,26-1 & 29-2.



Fig.11. BATTERY

(A)=YSR1080TV  
(B)=YSR1080TSV  
(C)=

(D)=  
(E)=  
(F)=

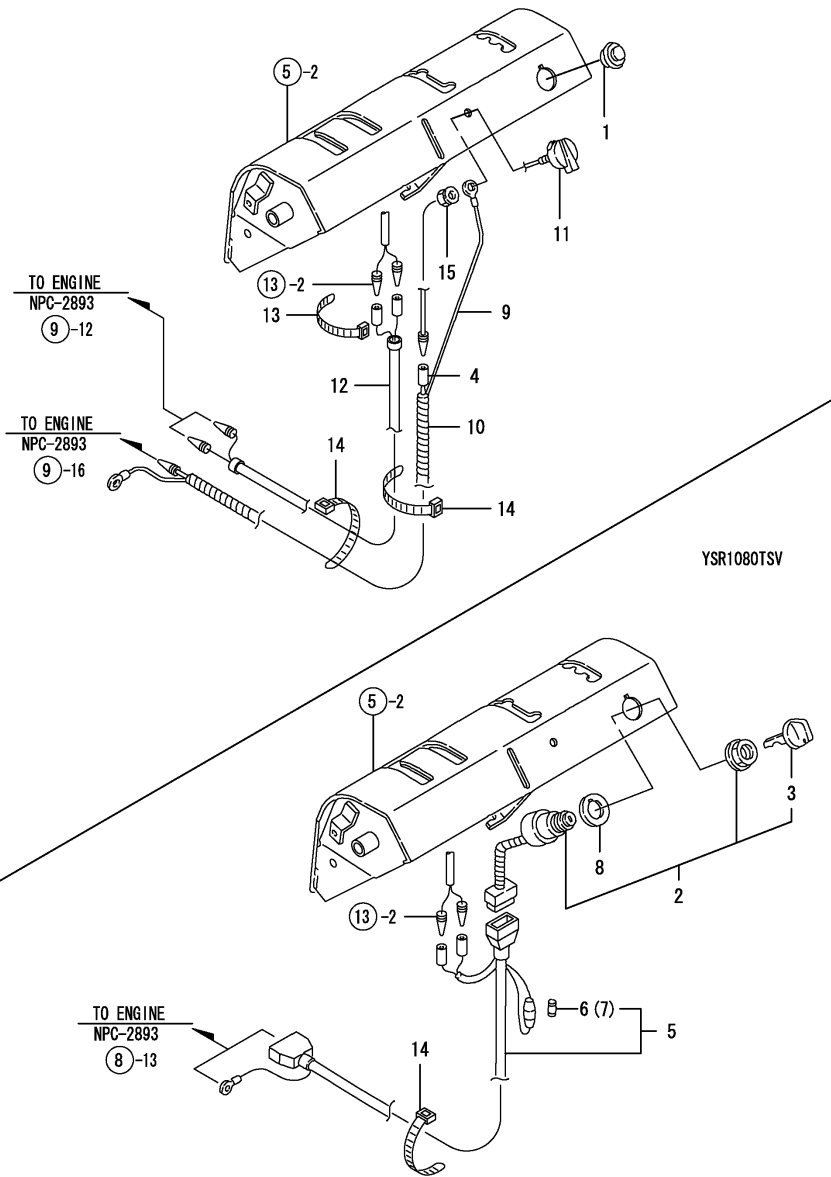


No.	Lev.	Parts No.	Description	Q'ty						I	R
				(A)	(B)	(C)	(D)	(E)	(F)		
1	1	1J3999-02010 (B=F011072)	WASHER 6		2						Z
2	1	1N1960-51150	MOUNT.BATTERY		1						
3	1	1N1960-51200	Y60-S4N(E) COMPL.		1						
3-1	1	1N1960-51201 (B=F010058)	BATTRY.38B20R(E) AS.		1						Q
3-2	1	1N1960-51211 (B=F010267)	BATTERY 38B20R(E)		1						S
3-3	1	1N1960-51212 (B=F010267)	BATTERY 38B20R(E)		1						N
4	1	1N1720-51550	RUBBER,LINING		2						
5	1	1N1720-51671	CABLE D,BATTERY POS.		1						
6	1	1N1720-51682	CABLE D,BATTERY GND.		1						
7	1	1N1721-52030	CASE D,BATTERY		1						
8	1	1N1721-52070	PLATE D,KEEP		1						
8-1	1	1N1721-52071 (B=F010058)	PLATE D,KEEP		1						N
8-2	1	1N1721-52072 (B=F010267)	PLATE D,KEEP		1						N
8-3	1	1N1721-52073 (B=F010267)	PLATE D,KEEP		1						N
9	1	1N1721-52090	SEAT,BATTERY		1						
10	1	1N1721-52120	COVER(A80X),BATTERY		1						
11	1	22137-080000	WASHER, 8		3						
12	1	22217-060000 (B=F011072)	WASHER, SPRING 6		2						Z
13	1	26016-080164	BOLT M 8X 16		3						
14	1	26051-080002	NUT, M8		3						
15	1	26647-060402	BOLT, WING M6X40		2						
15-1	1	26647-060502 (B=F010058)	BOLT, WING M6X50		2						N
15-2	1	26016-060504 (B=F011072)	BOLT, M6X 50		2						N
16	1	1N3020-51050 (B=F010058)	SPACER		4						W
17	1	22157-060000 (B=F011072)	WASHER, 6		2						W

Fig.12. SWITCH & HARNESS

(A)=YSR1080TV  
 (B)=YSR1080TSV  
 (C)=

(D)=  
 (E)=  
 (F)=



No.	Lev.	Parts No.	Description	Q'ty						I	R
				(A)	(B)	(C)	(D)	(E)	(F)		
1	1	1N1710-32180	GROMMET W/FILM	1							
2	1	1N1711-51250	SWITCH COMPL.,KEY		1						
3	2	1N1711-51240	KEY		1						
4	1	1N1723-51500	HARNESS TE	1							
5	1	1N1723-51511	HARNESS COMP.,KEY		1						
6	2	29411-200000	FUSE, CARTRIDGE 20A		1						
7	2	29411-200000	FUSE, CARTRIDGE 20A		1						1
8	1	1N1710-51520	SPACER,SWITCH		1						
9	1	1N1723-51520	HARNESS,BODY EARTH	1							
10	1	1N1723-51531	TUBE 870,CORRUGATED	1							
11	1	1N1711-51770	SWITCH,STOR	1							
12	1	1N1723-53500	HARNES TE,LIGHT	1							
13	1	1E6460-83400	BAND 100	1							
14	1	1E6102-84970	BAND 140,WIRE LOCK	2	1						
15	1	26051-080002	NUT, M8	1							

Remarks  
 (1)SPARE PARTS

Fig.13. LAMP

(A)=YSR1080TV  
 (B)=YSR1080TSV  
 (C)=

(D)=  
 (E)=  
 (F)=

No.	Lev.	Parts No.	Description	Q'ty						I	R
				(A)	(B)	(C)	(D)	(E)	(F)		
1	1	1N1711-51390	STAY,HEADLIGHT	1	1						
2	1	1N1711-51850	HEADLIGHT COMPL.	1	1						
3	2	1N1711-51860	LAMP 12V-15W G23	1	1						
4	1	1N1721-52470	STAY TD,HEADLIGHT	1	1						
4-1	1	1N1721-52471	STAY TD,HEADLIGHT	1	1						N
		(A=F010062) (B=F010267)									
5	1	26016-060164	BOLT 6X16 W/L.W.	2	2						
6	1	26016-080164	BOLT M 8X 16	2	2						
7	1	1E6102-84970	BAND 140,WIRE LOCK	1	1						

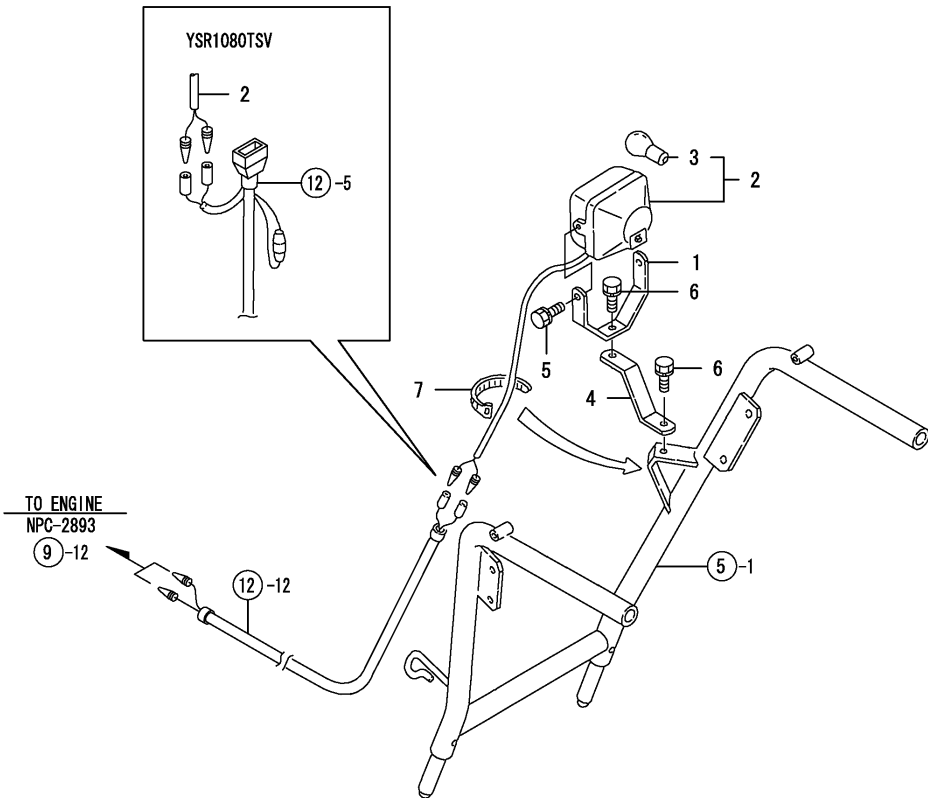
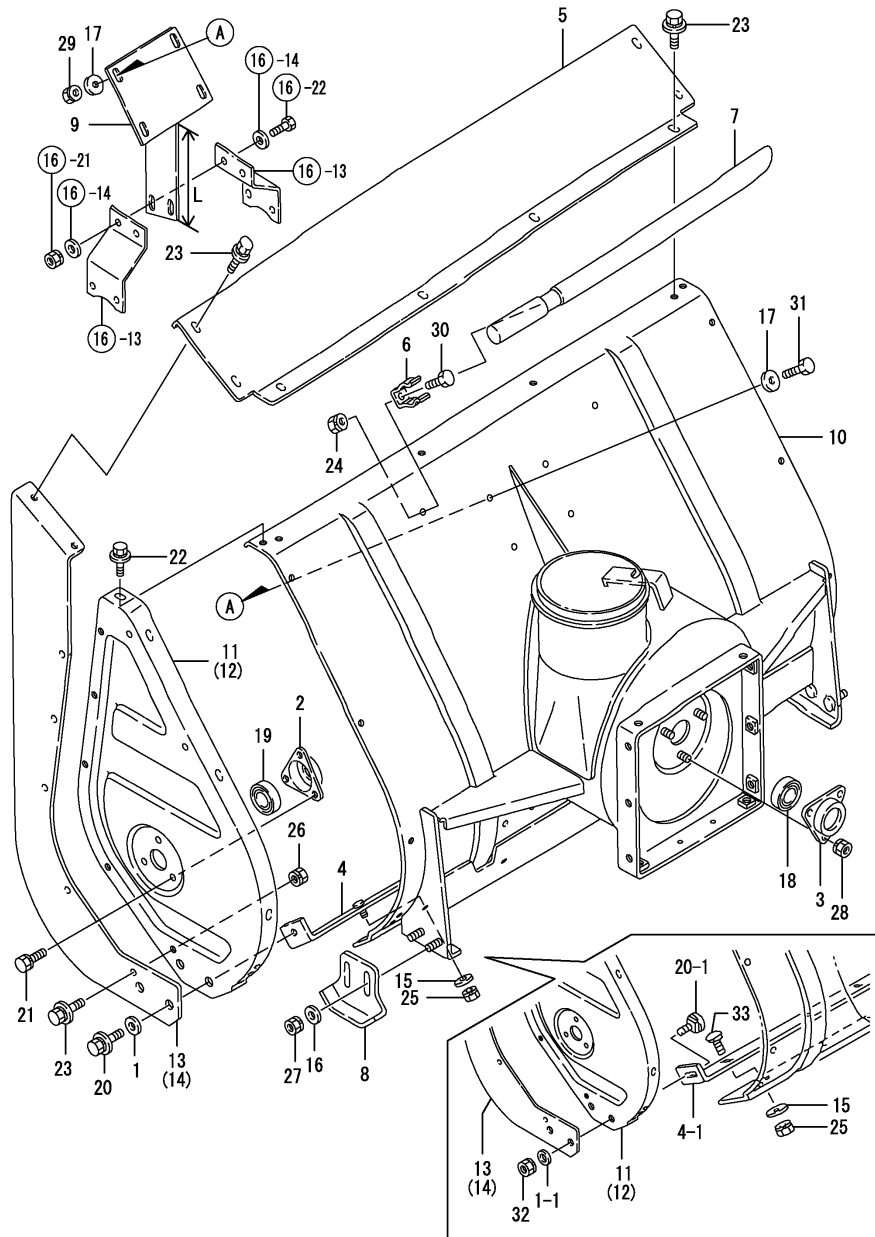


Fig.14. SNOW REMOVING FRAME

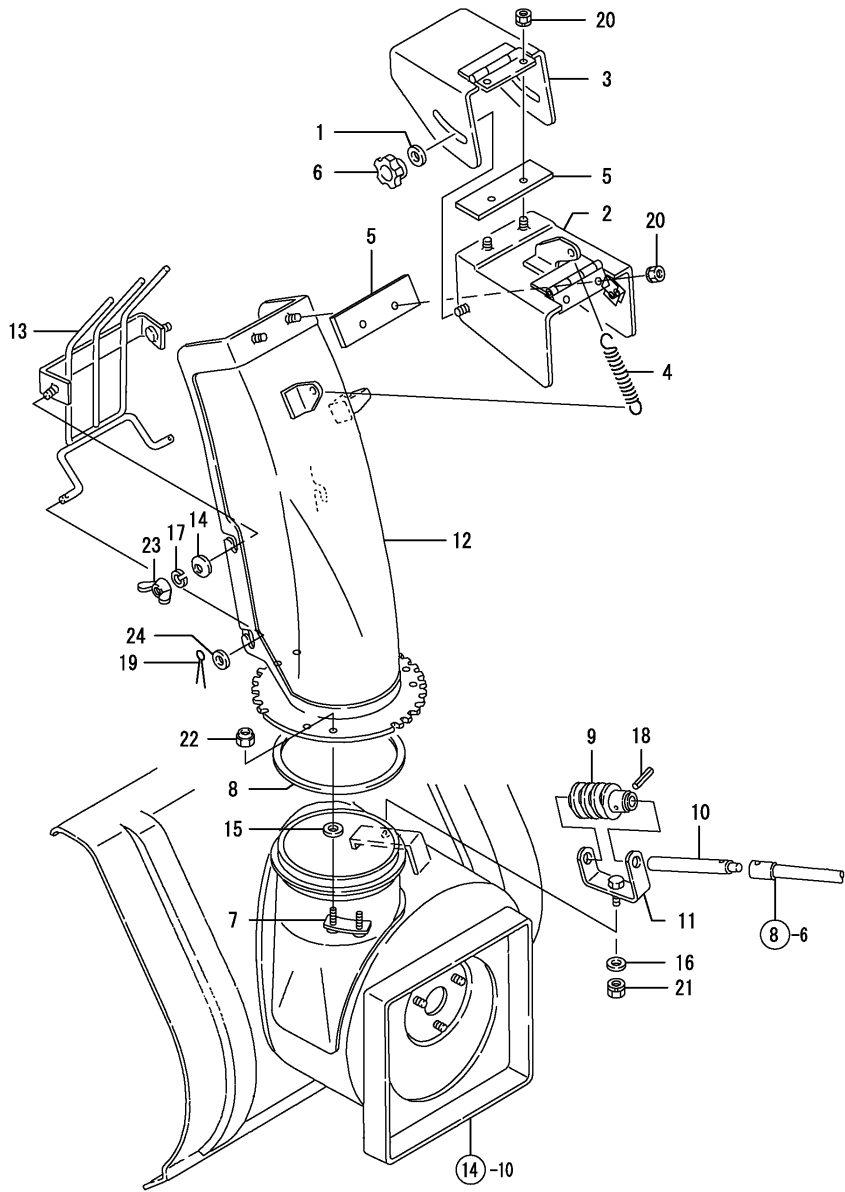


No.	Lev.	Parts No.	Description	Q'ty						I	R
				(A)	(B)	(C)	(D)	(E)	(F)		
1	1	1J3999-02010	WASHER, 6	2	2						
1-1	1	22137-080000	WASHER, 8	2	2						S
		(A=F010167) (B=F010721)									
2	1	1N1570-38200	BEARING 6203C	2	2						
3	1	1N1570-38210	BEARING 6203B	1	1						
4	1	1N1960-71000	PLATE,BOTTOM	1	1						
4-1	1	1N3020-71300	PLATE,BOTTOM 800	1	1						S
		(A=F010167) (B=F010721)									
4-2	1	1N3020-71301	PLATE,BOTTOM(800	1	1						N
		(A=FXXXXXXX) (B=F010947)									
5	1	1N1960-71030	COVER,UPPER AUX.	1	1						
6	1	1N1710-71060	METAL,LOCK	2	2						
6-1	1	1N1710-71061	STOPPER	2	2						N
		(A=F010062) (B=F010267)									
6-2	1	1N1710-71062	STOPPER	2	2						N
		(A=F010099) (B=F010394)									
7	1	1N1710-71071	ROD,SNOW SHOVELING	1	1						
8	1	1N1711-71100	GUIDE	2	2						
9	1	1N1960-71500	FIXTURE B,GEAR CASE	1	1						
9-1	1	1N3020-71400	FIXTURE B,GEAR CASE	1	1						S 1
		(A=F010050) (B=F010129)									
10	1	1N3020-71500	CASE E COMP.,AUGER	1	1						
11	1	1N1960-71551	PLATE L CMP,AUGER SD	1	1						
12	1	7N3020-71560	PL.AS.,AUGER SD.PL.R	1	1						
13	1	1N1720-82002	COVER L COMP.,AUX.	1	1						
14	1	1N1720-82022	COVER R COMP.,AUX.	1	1						
15	1	22137-060000	WASHER, 6	5	5						
16	1	22137-080000	WASHER, 8	4	4						
17	1	22137-080000	WASHER, 8	8	8						
18	1	24104-062034	BEARING, BALL 6203UU	1	1						
19	1	24104-062034	BEARING, BALL 6203UU	2	2						
20	1	26016-060164	BOLT 6X16 W/L.W.	2	2						
20-1	1	26487-080202	BOLT, M8X20	2	2						S
		(A=F010167) (B=F010721)									
20-2	1	1N3020-71320	BOLT, 8X20	2	2						N
		(A=F010167) (B=F010721)									
21	1	26016-080164	BOLT M 8X 16	6	6						
22	1	26018-060124	BOLT M 6X 12	12	12						
23	1	26018-060124	BOLT M 6X 12	18	18						
24	1	26051-060002	NUT, M6	2	2						
25	1	26051-060002	NUT, M6	5	5						
26	1	26051-060002	NUT, M6	2	2						
27	1	26051-080002	NUT, M8	4	4						
28	1	26051-080002	NUT, M8	3	3						
29	1	26051-080002	NUT, M8	4	4						
30	1	26117-060122	BOLT M 6X 12 PLATED	2	2						
31	1	26117-080202	BOLT M 8X 20 PLATED	4	4						
32	1	26051-080002	NUT, M8	2	2						W
		(A=F010167) (B=F010721)									
33	1	26487-060162	BOLT, M6X16	5	5						W
		(A=F010167) (B=F010721)									

Remarks  
 (1)REF. NO.9 L=131, NO.9-1 L=105



Fig.15. CHUTE

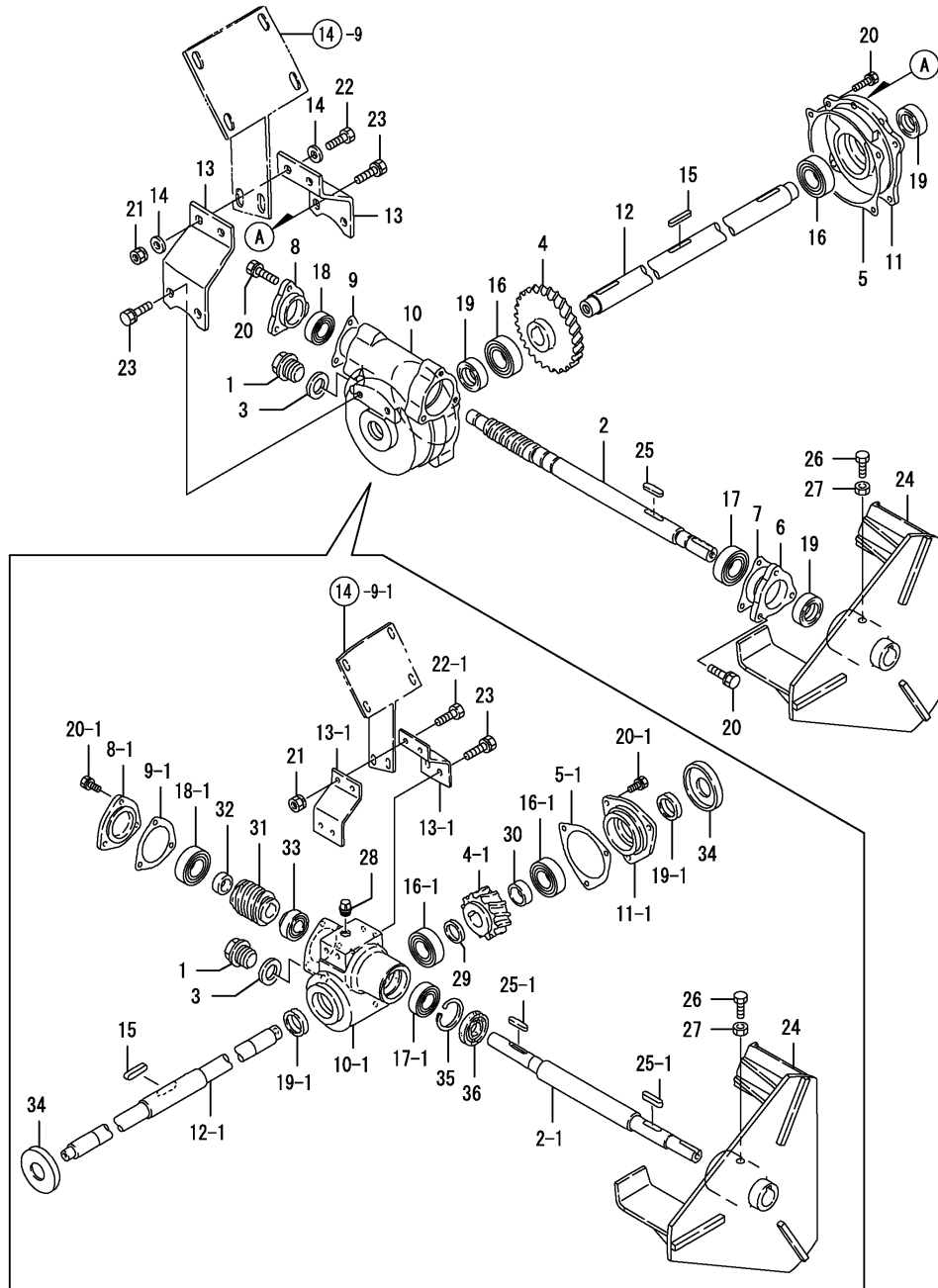


(A)=YSR1080TV  
(B)=YSR1080TSV  
(C)=

(D)=  
(E)=  
(F)=

No.	Lev.	Parts No.	Description	Qty						I	R
				(A)	(B)	(C)	(D)	(E)	(F)		
1	1	1J3999-02010	WASHER 6	2	2						
2	1	1N1711-73080	CAP COMP.,CHUTE	1	1						
2-1	1	1N1711-73081	CAP COMP.,CHUTE	1	1						N
				(A=F010062)	(B=F010267)						
3	1	1N1711-73140	CAP COMP.,SUB-CHUTE	1	1						
4	1	1N1570-73150	SPRING,CHUTE	1	1						
5	1	1N1711-73170	RUBBER,SNOW PROTECT.	2	2						
6	1	1N1711-73200	NUT,THUMB	2	2						
7	1	1N1711-73220	METAL,CHUTE LOCK	3	3						
8	1	1N1711-73280	PLATE,FLOOR	1	1						
9	1	1N1711-73320	WORM 3.5X3 R	1	1						
10	1	1N1711-73330	SHAFT,WORM	1	1						
11	1	1N1711-73350	SEAT,WORM BASE	1	1						
12	1	7N1723-73500	PL.ASSY.,CHUTE COMP.	1	1						
13	1	1N1960-73502	GUARD	1	1						
14	1	1N1711-73700	WASHER 6,CONICAL SPR	2	2						
14-1	1	22157-060000	WASHER, 6	2	2						N
				(A=FXXXXXXX)	(B=F011072)						
15	1	22117-060000	WASHER, 6	6	6						
16	1	22137-080000	WASHER, 8	1	1						
17	1	22217-060000	WASHER, SPRING 6	2	2						Z
				(A=FXXXXXXX)	(B=F011072)						
18	1	22351-060025	PIN, SPRING 6.0X25	1	1						
19	1	22417-200120	COTTER PIN 2.0X12	2	2						
20	1	26051-060002	NUT, M6	4	4						
21	1	26051-080002	NUT, M8	1	1						
22	1	26347-060002	NUT, M6	6	6						
23	1	26635-060002	NUT, WING M6	2	2						
23-1	1	26051-060002	NUT, M6	2	2						N
				(A=FXXXXXXX)	(B=F011072)						
24	1	22137-060000	WASHER, 6	2	2						

Fig.16. GEAR CASE

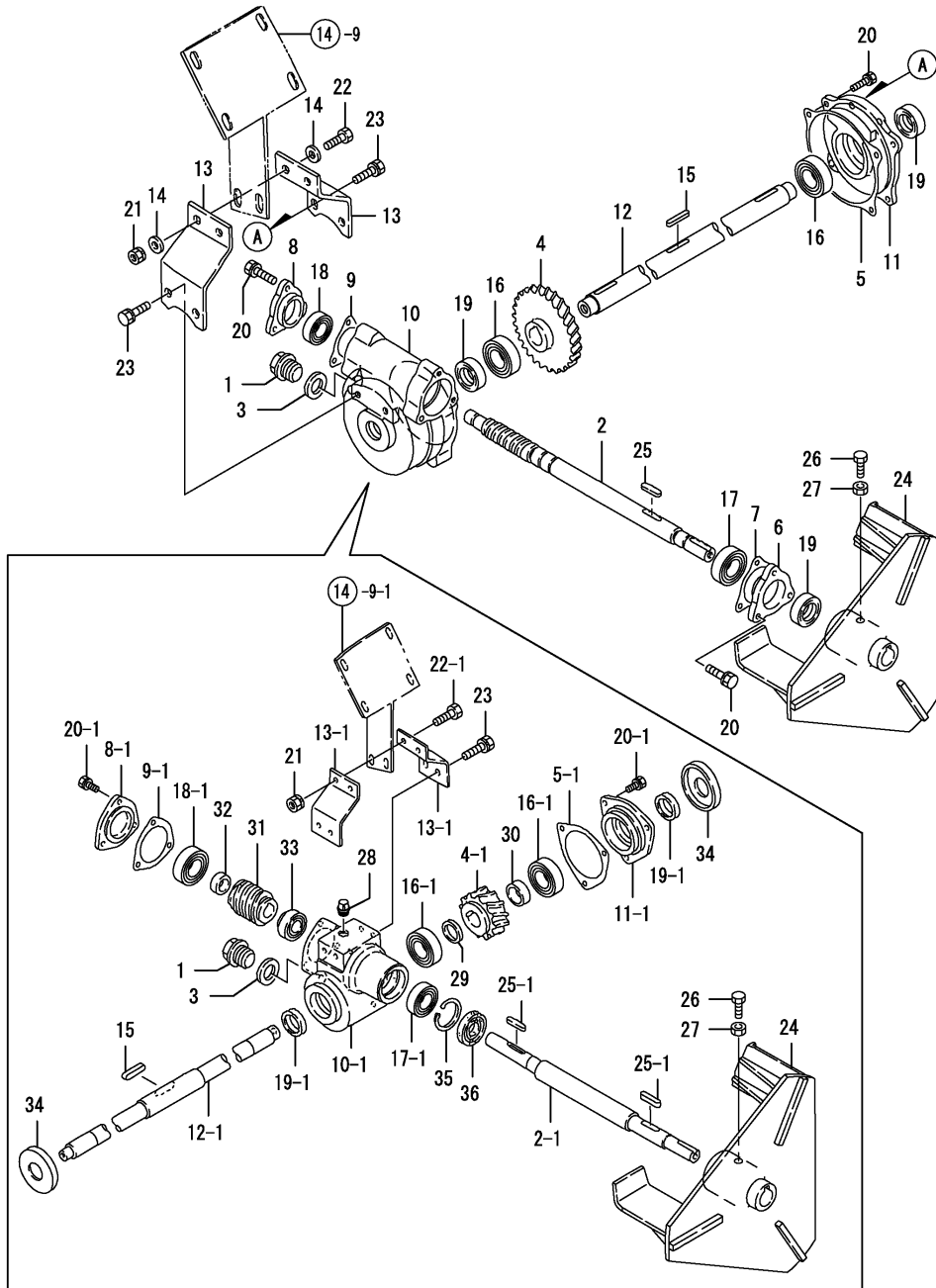


(A)=YSR1080TV  
(B)=YSR1080TSV  
(C)=

(D)=  
(E)=  
(F)=

No.	Lev.	Parts No.	Description	Q'ty						I	R
				(A)	(B)	(C)	(D)	(E)	(F)		
1	1	1N1711-74000	BOLT,DRAIN	1	1						
2	1	1N1721-74001	SHAFT,WORM	1	1						
2-1	1	1N3020-74000	SHAFT,BLOWER	1	1						S
3	1	1N1711-74010	PACKING 20X28X2,CU (A=F010050) (B=F010129)	1	1						
4	1	1N1710-74021	WHEEL,WORM	1	1						
4-1	1	1N1730-74110	WHEEL,WORM (A=F010050) (B=F010129)	1	1						S
5	1	1N1570-74050	PACKING C	1	1						
5-1	1	1N1730-74040	PACKING B (A=F010050) (B=F010129)	1	1						S
6	1	1N1570-74110	COVER A,KEEP (A=F010050) (B=F010129)	1	1						Z
7	1	1N1570-74120	PACKING A (A=F010050) (B=F010129)	1	1						Z
8	1	1N1570-74130	COVER B,KEEP	1	1						
8-1	1	1N1730-74010	COVER,KEEP (A=F010050) (B=F010129)	1	1						S
9	1	1N1570-74140	PACKING B	1	1						
9-1	1	1N1730-74030	PACKING A (A=F010050) (B=F010129)	1	1						S
10	1	1N1960-74502	GEAR CASE B	1	1						
10-1	1	1N1730-74003	CASE,WORM (A=F010050) (B=F010129)	1	1						S
11	1	1N1960-74512	COVER C,KEEP	1	1						
11-1	1	1N1730-74022	BEARING,AUGER (A=F010050) (B=F010129)	1	1						S
12	1	1N1960-74520	AUGER SHAFT	1	1						
12-1	1	1N3020-74100	SHAFT,AUGER (A=F010050) (B=F010129)	1	1						S
13	1	1N1960-74540	FIXTURE A,GER CASE	2	2						
13-1	1	1N3020-74250	FIXTURE,GEAR CASE (A=F010050) (B=F010129)	2	2						S
14	1	22137-080000	WASHER, 8 (A=F010050) (B=F010129)	4	4						Z
15	1	22512-050300	KEY, 5X 30	1	1						
16	1	24101-060044	BEARING, BALL 6004	2	2						
16-1	1	24101-062054	BEARING, BALL 6205 (A=F010050) (B=F010129)	2	2						S
17	1	24107-060044	BEARING, BALL 6004ZZ	1	1						
17-1	1	24101-060054	BEARING, BALL 6005 (A=F010050) (B=F010129)	1	1						S
18	1	24107-062024	BEARING, BALL 6202ZZ	1	1						
18-1	1	24101-063044	BEARING, BALL 6304 (A=F010050) (B=F010129)	1	1						S
19	1	24421-203508	SEAL, OIL TC203508	3	3						
19-1	1	24421-253807	SEAL, OIL TC253807 (A=F010050) (B=F010129)	2	2						S
20	1	26016-060204	BOLT M 6X 20	10	10						
20-1	1	26016-080204	BOLT M 8X 20 (A=F010050) (B=F010129)	6	6						S

Fig.16. GEAR CASE



(A)=YSR1080TV  
(B)=YSR1080TSV  
(C)=

(D)=  
(E)=  
(F)=

No.	Lev.	Parts No.	Description	Q'ty						I	R
				(A)	(B)	(C)	(D)	(E)	(F)		
21	1	26051-080002	NUT, M8	2	2						
22	1	26117-080252	BOLT M 8X 25 PLATED	2	2						
22-1	1	26117-080202	BOLT M 8X 20 PLATED	2	2						S
		(A=F010050) (B=F010129)									
23	1	26016-080164	BOLT M 8X 16	4	4						
24	1	1N1721-76000	BLOWER COMPL	1	1						
24-1	1	1N1721-76001	BLOWER ASSY	1	1						N
		(A=F010031) (B=F010058)									
25	1	22512-050300	KEY, 5X 30	1	1						
25-1	1	22550-070350	KEY 7X35	2	2						S
		(A=F010050) (B=F010129)									
26	1	26116-080202	BOLT, M8X 20 PLATED	1	1						
27	1	26717-080002	NUT, M8	1	1						
28	1	1N1570-74150	PLUG	1	1						W
		(A=F010050) (B=F010129)									
29	1	1N1730-74120	COLLAR 5,AUGER SHAFT	1	1						W
		(A=F010050) (B=F010129)									
30	1	1N1730-74130	COLLAR 13,AUGER SHFT	1	1						W
		(A=F010050) (B=F010129)									
31	1	1N1730-74210	WORM 3L2	1	1						W
		(A=F010050) (B=F010129)									
32	1	1N1730-74220	COLLAR,BLOWER SHAFT	1	1						W
		(A=F010050) (B=F010129)									
33	1	1N1730-74300	BEARING,TAPER ROLLE	1	1						W
		(A=F010050) (B=F010129)									
34	1	1N3020-74200	CAP 58,SEAL	2	2						W
		(A=F010050) (B=F010129)									
35	1	22252-000470	RING, 47	1	1						W
		(A=F010050) (B=F010129)									
36	1	24421-254708	SEAL, OIL TC254708	1	1						W
		(A=F010050) (B=F010129)									



Fig.17. AUGER

(A)=YSR1080TV  
 (B)=YSR1080TSV  
 (C)=

(D)=  
 (E)=  
 (F)=

No.	Lev.	Parts No.	Description	Qty						I	R
				(A)	(B)	(C)	(D)	(E)	(F)		
1	1	1N1960-75000	AUGER L	1	1						
2	1	1N1960-75020	AUGER R	1	1						
3	1	1N1710-75041	FLANGE R	1	1						
4	1	1N1570-75151	FLANGE L	1	1						
5	1	22157-080000	WASHER, 8	2	2						
6	1	22217-080000	WASHER, SPRING 8	2	2						
7	1	22512-050300	KEY, 5X 30	2	2						
8	1	26116-060202	BOLT, M6X 20 PLATED	2	2						
9	1	26116-080162	BOLT, M8X 16 PLATED	2	2						
10	1	26116-080252	BOLT, M8X 25 PLATED	2	2						
11	1	26347-060002	NUT, M6	2	2						
12	1	26717-080002	NUT, M8	2	2						

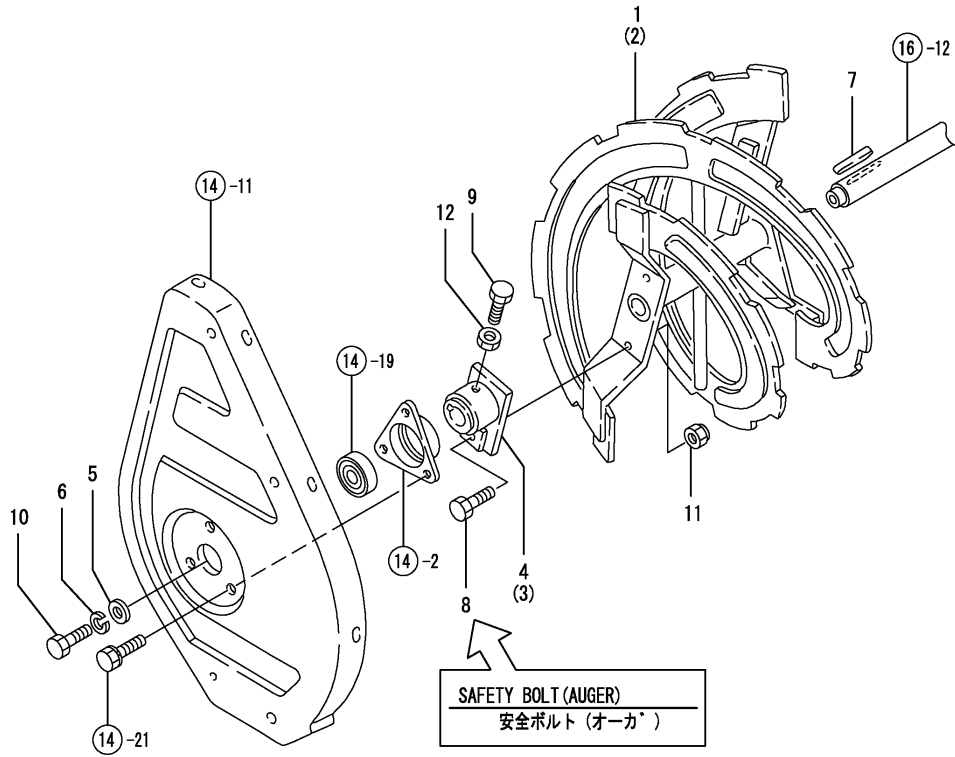
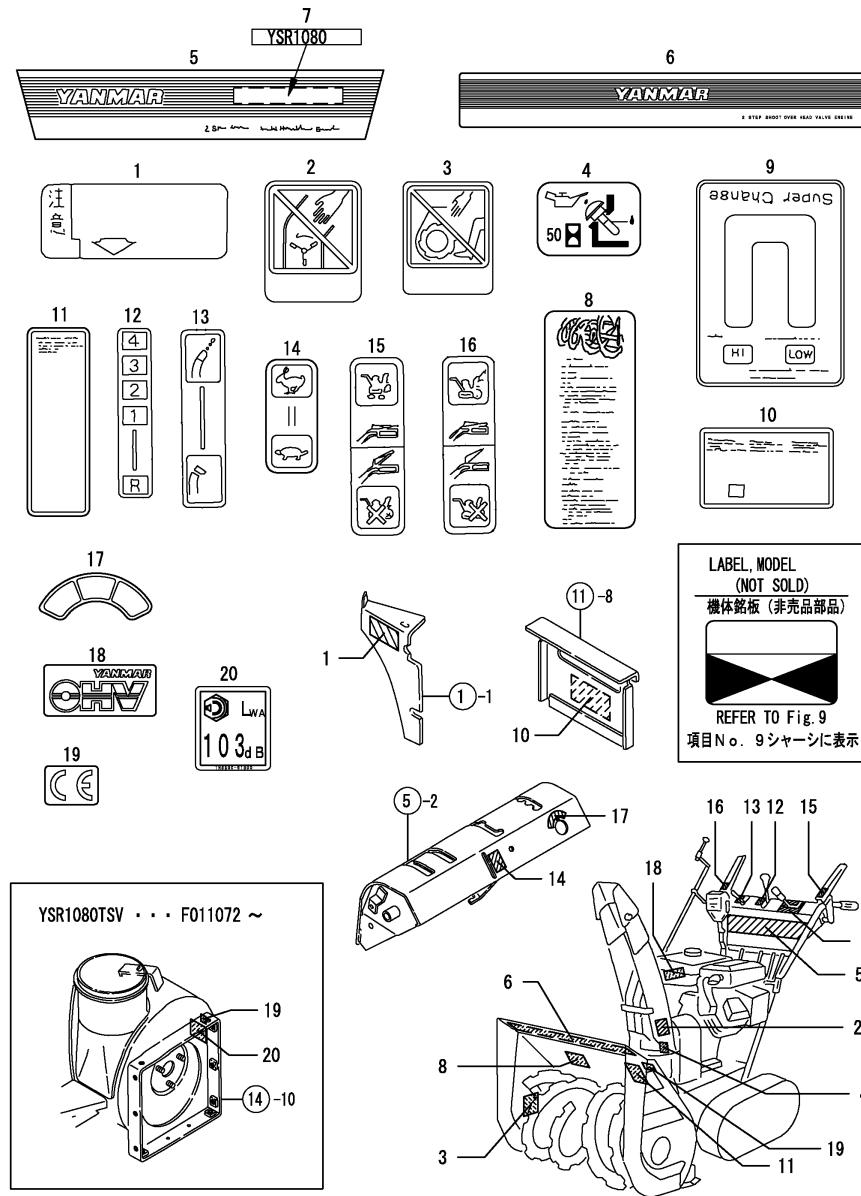


Fig.18. MARKS



(A)=YSR1080TV  
(B)=YSR1080TSV  
(C)=

(D)=  
(E)=  
(F)=

No.	Lev.	Parts No.	Description	Q'ty						I	R
				(A)	(B)	(C)	(D)	(E)	(F)		
1	1	160520-07271 (A=F010050) (B=F010129)	LABEL, DRAIN	1	1						Z
2	1	1N1711-68100 (A=F010050) (B=F010129)	MARK,SAFETY CAUTION	1	1						Z
3	1	1N1711-68110 (A=F010050) (B=F010129)	MARK B,SAFETY CAUT'N	1	1						Z
4	1	1N1711-68220	MARK,OIL CHECK	1	1						
5	1	1N1723-92521	NAMEPLATE,MODEL	1	1						
6	1	1N3020-92520	MARK "YANMAR"	1	1						
7	1	1N3020-92530	MARK "1080"	1	1						
8	1	1N1723-92550	LEBEL,BOLT REPLACEM	1	1						
9	1	1N1723-92560	MARK,HI-LOW SWITCH'G	1	1						
10	1	1N3020-92560	LABEL,BATTERY CAUT'N		1						
11	1	1N1713-92570	LABEL CAUTION	1	1						
12	1	1N1723-92570	MARK,CHANGE	1	1						
13	1	1N1723-92580	MARK,SNOW THROW IND	1	1						
14	1	1N1723-92590	MARK,ACCELERATOR	1	1						
15	1	1N1723-92600	MARK,TRAVEL CLUTCH	1	1						
16	1	1N1723-92610	MARK,SNOW REM.CLUTCH	1	1						
17	1	1N1723-92620	MARK,SWITCH		1						
18	1	1N1313-93120	MARK "OHV"	1	1						
19	1	1E1061-86610 (A=F010044) (B=F010063)	MARK "CE"	1	1						W
20	1	1N3300-91300 (B=F011072)	MARK, SOUND LEVEL		1						W

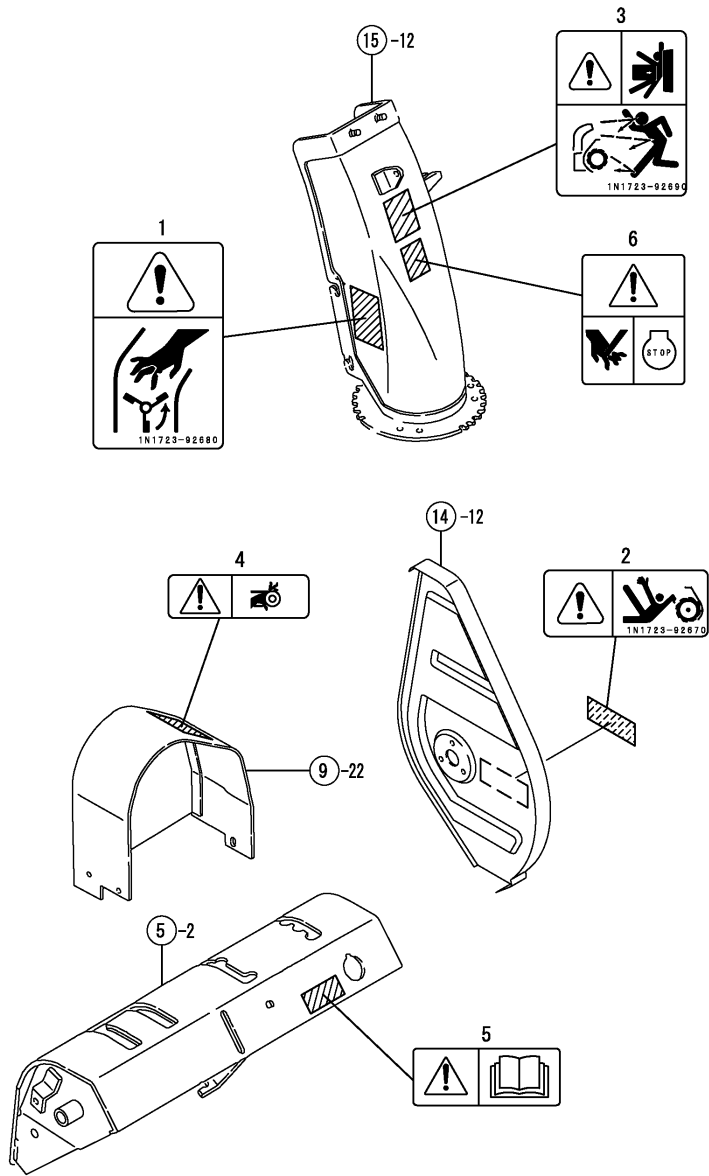
Remarks  
\* FOR SAFETY LABELS,  
REFER TO GROUP NO.20



Fig.20. LABELS(SAFETY(ADDNL.ITEM)

(A)=YSR1080TV  
(B)=YSR1080TSV  
(C)=

(D)=  
(E)=  
(F)=



No.	Lev.	Parts No.	Description	Q'ty						I	R
				(A)	(B)	(C)	(D)	(E)	(F)		
1	1	1N1723-92680 (A=F010050)	WARNING,SHOOTER (B=F010129)	1	1						W
2	1	1N1723-92670	DANGER,SNW.REMV.UNIT	1	1						W
3	1	1N1723-92690 (A=F010050)	WARNING,SCATTERINGS (B=F010129)	1	1						W
4	1	1W4909-92310 (A=F010050)	CAUTION,BELT,COVWR (B=F010129)	1	1						W
5	1	1W4909-92350 (A=F010050)	LABEL (B=F010129)	1	1						W
6	1	1W4909-92360 (A=F010050)	CAUTION,ENGINE,STOP (B=F010129)	1	1						W

## Parts No. Index

Parts No.	Fig. No.	Ref. No.
160520-07271	18	1
1A1040-58160	7	9
1A1140-58050	8	12
1E1061-86610	18	19
1E6102-84970	6	26
	12	14
	13	7
1E6460-83400	1	27
	6	25
	7	20
	8	15
	12	13
1F1150-92000	19	4
1J3000-20020	10	2
1J3192-40550	2	15
1J3940-14250	3	12 -1
1J3999-00250	6	51
1J3999-00260	6	1
1J3999-01050	6	2
1J3999-01090	9	1
1J3999-02010	1	6
	11	1
	14	1
	15	1
1J3999-02020	10	1
		16 -1
1J3999-02050	10	1 -1
		1 -2
		16 -2
		16 -3
1J3999-02110	6	3
1J3999-02130	8	1
1J3999-05010	6	24
1J3999-06000	6	4
1N1313-93120	18	18
1N1570-12200	2	5
1N1570-12280	2	10
1N1570-12350	2	12
1N1570-21070	4	10
1N1570-21090	4	12
1N1570-21170	4	13
1N1570-21200	4	14
1N1570-21300	4	18
1N1570-21600	4	20
1N1570-32290	7	6
1N1570-32320	7	7
1N1570-32950	7	8
1N1570-36351	9	4
1N1570-38000	10	3
1N1570-38010	10	6

Parts No.	Fig. No.	Ref. No.
1N1570-38020	10	7
1N1570-38050	10	10
1N1570-38090	10	11
1N1570-38130	10	12
1N1570-38150	10	13
1N1570-38151	10	13 -1
1N1570-38180	10	14
1N1570-38200	14	2
1N1570-38210	10	15
	14	3
1N1570-51130	1	26
1N1570-73150	15	4
1N1570-73260	8	14
1N1570-74050	16	5
1N1570-74110	16	6
1N1570-74120	16	7
1N1570-74130	16	8
1N1570-74140	16	9
1N1570-74150	16	28
1N1570-75151	17	4
1N1710-12240	2	9
1N1710-12241	2	9 -1
1N1710-21001	4	1
1N1710-21010	4	4
1N1710-21022	4	6
1N1710-21023	4	6 -1
1N1710-21024	4	6 -2
1N1710-21320	4	19
1N1710-32180	12	1
1N1710-32600	1	7
1N1710-36370	9	5
1N1710-38000	10	4
1N1710-38020	10	8
1N1710-38040	10	9
1N1710-51520	12	8
1N1710-71060	14	6
1N1710-71061	14	6 -1
1N1710-71062	14	6 -2
1N1710-71071	14	7
1N1710-74021	16	4
1N1710-75041	17	3
1N1710-82140	5	7
1N1711-12020	3	2
1N1711-12030	3	3
1N1711-12200	2	6
1N1711-12230	2	8
1N1711-12231	2	8 -1
1N1711-12280	2	11
1N1711-12560	3	8
1N1711-13201	3	10

Parts No.	Fig. No.	Ref. No.
1N1711-32330	1	25
1N1711-36090	9	21
1N1711-36110	9	10
1N1711-51240	12	3
1N1711-51250	12	2
1N1711-51390	13	1
1N1711-51770	12	11
1N1711-51850	13	2
1N1711-51860	13	3
1N1711-68100	18	2
1N1711-68110	18	3
1N1711-68220	18	4
1N1711-71100	14	8
1N1711-73080	15	2
1N1711-73081	15	2 -1
1N1711-73140	15	3
1N1711-73170	15	5
1N1711-73200	15	6
1N1711-73220	15	7
1N1711-73280	15	8
1N1711-73320	15	9
1N1711-73330	15	10
1N1711-73350	15	11
1N1711-73700	15	14
1N1711-74000	16	1
1N1711-74010	16	3
1N1713-31010	6	6
1N1713-92570	18	11
1N1720-12071	2	2
1N1720-21062	4	8
1N1720-21071	4	11
1N1720-21211	4	15
1N1720-21231	4	16
1N1720-21240	4	17
1N1720-36100	9	9
1N1720-36120	9	12
1N1720-36221	9	14
1N1720-36250	9	3
1N1720-51550	11	4
1N1720-51671	11	5
1N1720-51682	11	6
1N1720-82002	14	13
1N1720-82022	14	14
1N1721-12051	2	1
1N1721-12080	2	3
1N1721-12112	2	4
1N1721-12220	2	7
1N1721-12221	2	7 -1
1N1721-12350	3	6
1N1721-12360	2	13

Parts No.	Fig. No.	Ref. No.
1N1721-12401	3	7
1N1721-12560	2	14
1N1721-13181	3	9
1N1721-21001	4	2
1N1721-21010	4	5
1N1721-35001	5	8
1N1721-35040	5	5
1N1721-35070	5	3
1N1721-36001	9	7
1N1721-36002	9	7 -1
1N1721-36070	9	8
1N1721-36111	9	11
1N1721-36121	9	13
1N1721-52030	11	7
1N1721-52070	11	8
1N1721-52071	11	8 -1
1N1721-52072	11	8 -2
1N1721-52073	11	8 -3
1N1721-52090	11	9
1N1721-52120	11	10
1N1721-52470	13	4
1N1721-52471	13	4 -1
1N1721-74001	16	2
1N1721-76000	16	24
1N1721-76001	16	24 -1
1N1723-00061	1	1
1N1723-00201	1	2
1N1723-00280	1	33
1N1723-00300	1	3
1N1723-00301	1	3 -1
1N1723-00330	1	4
1N1723-00331	1	4 -1
1N1723-00350	1	5
1N1723-01000	1	17
1N1723-02001	1	22
1N1723-02010	1	23
1N1723-02020	1	24
1N1723-12000	3	1
1N1723-12030	3	4
1N1723-12400	3	26
1N1723-30501	5	1
1N1723-30660	5	4
1N1723-30680	5	6
1N1723-31011	6	7
1N1723-31040	6	8
1N1723-31050	6	9
1N1723-31110	6	10
1N1723-31150	6	11
1N1723-31160	6	12
1N1723-31231	6	13

## Parts No. Index

Parts No.	Fig. No.	Ref. No.
1N1723-31251	6	14
1N1723-31270	6	15
1N1723-31300	6	49
1N1723-31310	6	50
1N1723-31350	6	5
1N1723-31360	6	20
1N1723-31371	6	16
1N1723-31380	6	17
1N1723-31390	6	18
1N1723-31410	6	19
1N1723-31501	6	21
1N1723-31510	6	22
1N1723-31520	6	23
1N1723-32002	7	1
1N1723-32003	7	1 -1
1N1723-32010	7	2
1N1723-32030	7	3
1N1723-32031	7	3 -1
1N1723-32060	7	4
1N1723-32070	7	2 -1
1N1723-32080	7	5
1N1723-34000	8	2
1N1723-34010	8	3
1N1723-34020	8	4
1N1723-34051	8	5
1N1723-34081	8	6
1N1723-34100	8	7
1N1723-34110	8	8
1N1723-34111	8	8 -1
1N1723-34141	8	9
1N1723-34150	8	10
1N1723-34160	8	11
1N1723-34170	8	29
1N1723-38500	10	3 -1
1N1723-51500	12	4
1N1723-51511	12	5
1N1723-51520	12	9
1N1723-51531	12	10
1N1723-53500	12	12
1N1723-92521	18	5
1N1723-92550	18	8
1N1723-92560	18	9
1N1723-92570	18	12
1N1723-92580	18	13
1N1723-92590	18	14
1N1723-92600	18	15
1N1723-92610	18	16
1N1723-92620	18	17
1N1723-92670	20	2
1N1723-92680	20	1

Parts No.	Fig. No.	Ref. No.
1N1723-92690	20	3
1N1730-74003	16	10 -1
1N1730-74010	16	8 -1
1N1730-74022	16	11 -1
1N1730-74030	16	9 -1
1N1730-74040	16	5 -1
1N1730-74110	16	4 -1
1N1730-74120	16	29
1N1730-74130	16	30
1N1730-74210	16	31
1N1730-74220	16	32
1N1730-74300	16	33
1N1960-21000	4	3
1N1960-21050	4	7
1N1960-21060	4	9
1N1960-36100	9	2
1N1960-38000	10	5
1N1960-51150	11	2
1N1960-51200	11	3
1N1960-51201	11	3 -1
1N1960-51211	11	3 -2
1N1960-51212	11	3 -3
1N1960-71000	14	4
1N1960-71030	14	5
1N1960-71500	14	9
1N1960-71551	14	11
1N1960-73502	15	13
1N1960-74502	16	10
1N1960-74512	16	11
1N1960-74520	16	12
1N1960-74540	16	13
1N1960-75000	17	1
1N1960-75020	17	2
1N3020-12050	3	5
1N3020-35000	9	25
1N3020-51050	11	16
1N3020-71300	14	4 -1
1N3020-71301	14	4 -2
1N3020-71320	14	20 -2
1N3020-71400	14	9 -1
1N3020-71500	14	10
1N3020-74000	16	2 -1
1N3020-74100	16	12 -1
1N3020-74200	16	34
1N3020-74250	16	13 -1
1N3020-92520	18	6
1N3020-92530	18	7
1N3020-92560	18	10
1N3021-38600	10	6 -1
1N3300-00050	1	42

Parts No.	Fig. No.	Ref. No.
1N3300-71320	14	33 -1
1N3300-91300	18	20
1S6002-61160	7	10
1S6240-63810	8	13
1W4909-92310	20	4
1W4909-92350	20	5
1W4909-92360	20	6
22117-060000	1	28
		38
	6	27
		28
		29
		30
		52
	8	16
	15	15
22117-080000	1	40
	6	31
	7	11
	8	17
22117-100000	7	12
22117-120000	4	42
	6	32
	7	13
	8	19
22137-060000	1	8
		43
	14	15
	15	24
22137-080000	1	29
	3	11
	5	9
	10	16
	11	11
	14	1 -1
		16
		17
	15	16
	16	14
22137-100000	1	18
22137-120000	8	18
22137-200000	8	20
22157-060000	4	43
	11	17
	15	14 -1
22157-080000	3	12
		23
	4	21
	10	17
	17	5

Parts No.	Fig. No.	Ref. No.
22217-060000	1	9
		10
		39
	11	12
	15	17
22217-080000	3	13
		24
	10	18
	17	6
22217-100000	1	19
	5	10
	10	19
22217-120000	8	21
22232-120000	8	1 -1
		21 -1
22242-000120	4	22
	6	33
22242-000150	2	16
	4	23
22242-000190	4	24
22242-000200	8	22
22242-000250	4	25
22252-000350	2	17
22252-000470	16	35
22272-000050	1	30
22272-000070	6	34
22292-000170	6	35
22351-050020	6	36
22351-060025	4	26
	15	18
22372-040000	8	23
22372-060000	1	31
	6	37
22372-080000	7	14
22417-200120	6	38
		39
		40
		53
	8	24
		25
	15	19
22417-200160	6	41
	7	15
	8	26
22417-320250	6	42
	7	16
	8	27
22512-050300	3	14
	4	27
	10	20

## Parts No. Index

Parts No.	Fig. No.	Ref. No.
22512-050300	16	15
		25
		17 7
22512-050350	3	15
22550-070350	16	25 -1
24101-060044	16	16
24101-060054	16	17 -1
24101-062054	16	16 -1
24101-063044	16	18 -1
24104-060024	4	28
24104-060034	2	18
24104-060044	4	29
		30
24104-062024	4	31
24104-062034	10	21
	14	18
		19
24104-063044	10	22
24107-060044	16	17
24107-062020	2	19
24107-062024	16	18
24421-203508	16	19
24421-253807	16	19 -1
24421-254708	16	36
24550-012150	6	43
		44
	7	19
	8	31
24550-015150	4	32
		33
24550-020100	10	22 -1
25122-003401	3	16
		17
26016-060124	9	15
26016-060162	4	44
26016-060164	4	34
	9	23
	13	5
	14	20
26016-060202	4	35 -1
26016-060204	1	11
	4	35
		36
	16	20
26016-060504	11	15 -2
26016-080162	3	18
26016-080164	9	16
	11	13
	13	6
	14	21

Parts No.	Fig. No.	Ref. No.
26016-080164	16	23
26016-080204	10	23
	16	20 -1
26016-080302	10	24
26016-100254	1	20
26018-060124	1	12
	3	19
	9	17
		24
	14	22
		23
26018-060164	9	18
26018-080164	1	13
	5	11
	9	19
		20
26018-080204	3	20
	9	6
26018-080252	9	6 -1
26023-040102	1	34
26051-060002	1	44
	4	37
	14	24
		25
		26
	15	20
		23 -1
26051-080002	1	41
	3	21
	5	12
	7	17
	10	25
		26
		14
		15
		28
		29
		32
	15	21
	16	21
26106-060122	1	35
		36
26106-060402	1	37
26116-060162	1	14
26116-060202	17	8
	19	2
26116-060254	1	15
26116-060702	1	16
26116-080162	17	9

Parts No.	Fig. No.	Ref. No.
26116-080202	5	13
	16	26
26116-080252	2	20
	3	22
		25
	4	38
	6	45
	10	27
	17	10
26116-080254	10	29 -1
26116-080304	10	24 -1
		24 -2
		29 -2
		29 -3
26116-100252	5	14
	10	28
26116-100302	5	15
26116-100352	5	16
26117-060122	1	45
	14	30
26117-060452	1	37 -1
26117-080202	14	31
	16	22 -1
26117-080252	10	29
	16	22
26117-080304	5	17
26347-060002	6	46
	15	22
	17	11
	19	3
26347-080002	4	39
	10	26 -1
		26 -2
		30
26367-120002	8	28 -1
26487-060162	14	33
26487-080202	14	20 -1
26635-060002	15	23
26647-060402	11	15
26647-060502	11	15 -1
26717-060002	4	40
26717-080002	1	32
	2	21
	4	41
	5	18
	6	47
		48
	7	18
	8	30
	10	31

Parts No.	Fig. No.	Ref. No.
26717-080002	16	27
	17	12
26717-100002	1	21
	5	19
26717-120002	8	28
28110-100000	19	1
29411-200000	12	6
		7
7N1723-30510	5	2
7N1723-30511	5	2 -1
7N1723-37000	9	22
7N1723-37050	9	22 -1
7N1723-73500	15	12
7N3020-71560	14	12